

PSN INSTITUTE OF TECHNOLOGY & SCIENCE

Melathediyoar, Tirunelveli - 627 152

[Approved by AICTE & Affiliated to Anna University, NCC 5(TN) Battalion]

ACADEMIC YEAR-2022-23

CIVIL ENGINEERING STUDENT FEEDBACK FORM -ANALYSIS

ACADEMIC YEAR-2022-23

| S.NO | PARAMETERS | 4 | 3 | 2 | 1 |
|------------------------------|--|-------|-------|-------|----|
| QUESTIONS ON ACADEMIC | | | | | |
| 1. | Teachers take classes regularly, cover the syllabus with clear explanations on all topics | 73.0% | 27.0% | 0.0% | 0% |
| 2. | Teachers clarify students' queries inside and outside the classes. | 79.0% | 21.0% | 0.0% | 0% |
| 3. | Teachers mentor students on regular basis and motivate them to focus on studies, co and extra-curricular activities. | 74.0% | 26.0% | 0.0% | 0% |
| 4. | Teachers organize guest lecturers/ seminars/ workshops/ internships/ field visits/ projects at Industries on regular basis. | 96.0% | 4.0% | 0.0% | 0% |
| 5. | Classrooms and Labs are clean and neat and enable quality learning. | 87.0% | 13.0% | 0.00% | 0% |
| 6. | Laboratory experiments enable effective learning and understanding of concepts and experiments. | 76.0% | 19.0% | 5.00% | 0% |
| 7. | Equipment and Computers are adequate and meet students' requirements. | 75.0% | 25.0% | 0.00% | 0% |
| 8. | Internal tests and end-semester examinations are periodically conducted towards students' continuous evaluation. | 73.0% | 27.0% | 0.00% | 0% |
| 9. | Students' results and attendance records are transparent and are displayed in notice boards | 84.0% | 16.0% | 0.00% | 0% |
| 10. | Students get additional skills towards employability through value added programs | 65.0% | 29.0% | 6.00% | 0% |
| 11. | Teachers practice Outcome Based Education and enable Course and Program outcomes towards students' knowledge, skills and behavior. | 83.0% | 17.0% | 0.00% | 0% |
| QUESTIONS ON AMBIENCE | | | | | |
| 12. | Library ambience is good for informal and self-learning. | 71.0% | 29.0% | 0.00% | 0% |
| 13. | Library is having good number of text and reference books and additional books for competitive exams. | 76.0% | 24.0% | 0.00% | 0% |
| 14. | Library is having additional resources like eBooks, e-Journals in the Digital Library. | 76.0% | 23.0% | 1.00% | 0% |
| 15. | High speed Internet facilities are available in the Campus. | 79.0% | 21.0% | 0.00% | 0% |
| 16. | Co and Extra Curricular (sports & games) facilities give good opportunities for students to explore themselves. | 85.0% | 15.0% | 0.00% | 0% |
| 17. | Canteen & Dinning space are adequate. | 82.0% | 18.0% | 0.00% | 0% |
| 18. | Quality, Clean drinking water is available. | 80.0% | 17.0% | 3.00% | 0% |
| 19. | Toilets/Washrooms are hygienic and well maintained. | 81.0% | 19.0% | 0.00% | 0% |
| 20. | The buildings and Class Rooms are accessible to differently abled persons. | 82.0% | 12.0% | 0.00% | 0% |
| 21. | Institute is having good hostel and mess facilities. | 75.0% | 25.0% | 0.00% | 0% |
| 22. | Institute is having good Gym and Yoga Centers. | 67.0% | 24.0% | 9.00% | 0% |
| 23. | Institute is having good transport facilities and is also accessible through public transport. | 71.0% | 29.0% | 0.00% | 0% |
| 24. | Campus is green, plastic-free and eco-friendly. | 74.0% | 26.0% | 0.00% | 0% |



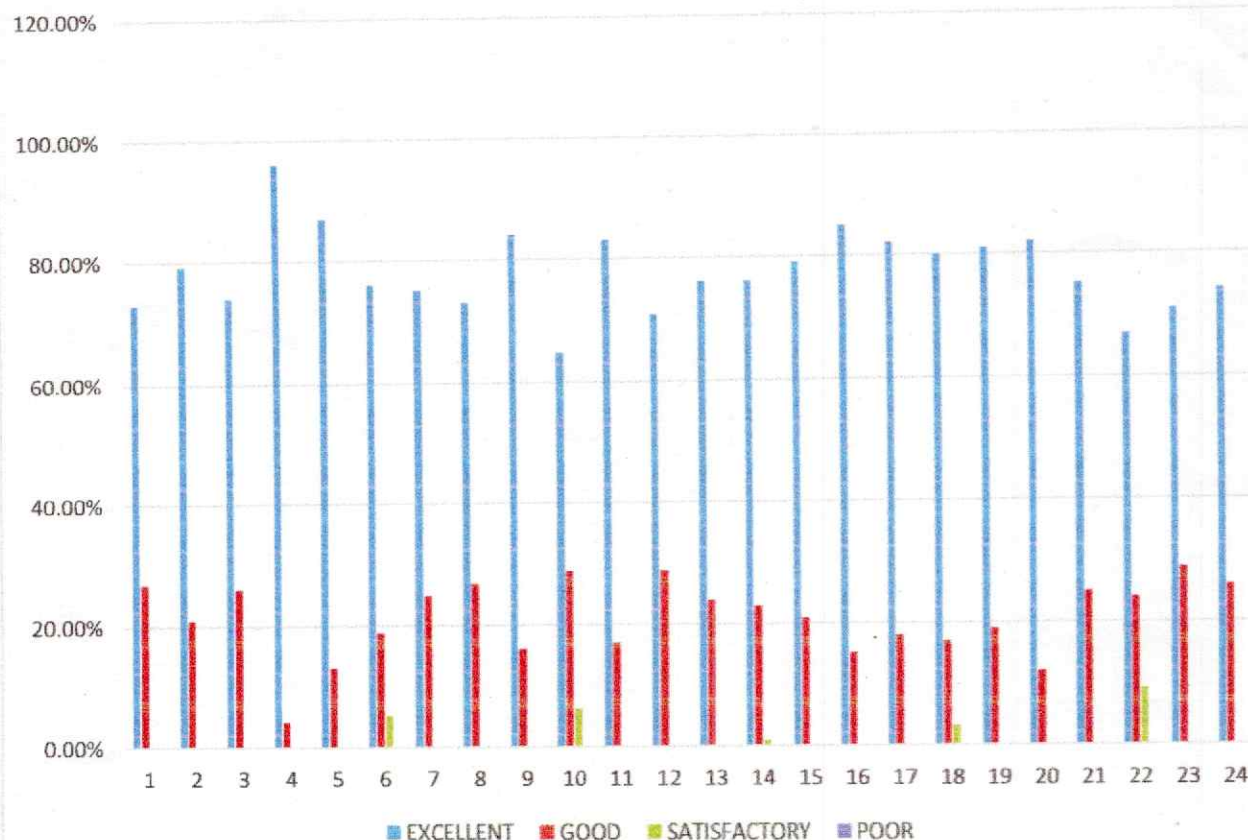
PSN INSTITUTE OF TECHNOLOGY & SCIENCE

Melathediyoar, Tirunelveli - 627 152

[Approved by AICTE & Affiliated to Anna University, NCC 5(TN) Battalion]

ACADEMIC YEAR-2022-23

CIVIL ENGINEERING STUDENT FEEDBACK FORM ANALYSIS



[Signature]
Dr. M. KATHIRVEL, B.E., M.B.A., M.E., Ph.D.
PRINCIPAL,
PSN Institute of Technology and Science
Melathediyoar, Tirunelveli - 627 152



PSN INSTITUTE OF TECHNOLOGY & SCIENCE

Melathediyoar, Tirunelveli - 627 152

[Approved by AICTE & Affiliated to Anna University, NCC 5(TN) Battalion]

ACADEMIC YEAR-2022-23

COMPUTER SCIENCE ENGINEERING STUDENT FEEDBACK FORM-ANALYSIS

| S.NO | PARAMETERS | 4 | 3 | 2 | 1 |
|------------------------------|--|-------|-------|------|------|
| QUESTIONS ON ACADEMIC | | | | | |
| 1. | Teachers take classes regularly, cover the syllabus with clear explanations on all topics | 88.0% | 12.0% | 0.0% | 0.0% |
| 2. | Teachers clarify students' queries inside and outside the classes. | 75.0% | 25.0% | 0.0% | 0.0% |
| 3. | Teachers mentor students on regular basis and motivate them to focus on studies, co and extra-curricular activities. | 75.0% | 24.0% | 1.0% | 0.0% |
| 4. | Teachers organize guest lecturers/ seminars/ workshops/ internships/ field visits/ projects at Industries on regular basis. | 71.0% | 29.0% | 0.0% | 0.0% |
| 5. | Classrooms and Labs are clean and neat and enable quality learning. | 85.0% | 15.0% | 0.0% | 0.0% |
| 6. | Laboratory experiments enable effective learning and understanding of concepts and experiments. | 75.0% | 16.0% | 9.0% | 0.0% |
| 7. | Equipment and Computers are adequate and meet students' requirements. | 76.0% | 24.0% | 0.0% | 0.0% |
| 8. | Internal tests and end-semester examinations are periodically conducted towards students' continuous evaluation. | 75.0% | 25.0% | 0.0% | 0.0% |
| 9. | Students' results and attendance records are transparent and are displayed in notice boards | 73.0% | 24.0% | 3.0% | 0.0% |
| 10. | Students get additional skills towards employability through value added programs | 84.0% | 16.0% | 0.0% | 0.0% |
| 11. | Teachers practice Outcome Based Education and enable Course and Program outcomes towards students' knowledge, skills and behavior. | 75.0% | 25.0% | 0.0% | 0.0% |
| QUESTIONS ON AMBIENCE | | | | | |
| 12. | Library ambience is good for informal and self-learning. | 69.0% | 24.0% | 7.0% | 0.0% |
| 13. | Library is having good number of text and reference books and additional books for competitive exams. | 74.0% | 26.0% | 0.0% | 0.0% |
| 14. | Library is having additional resources like eBooks, e-Journals in the Digital Library. | 74.0% | 24.0% | 0.0% | 0.0% |
| 15. | High speed Internet facilities are available in the Campus. | 80.0% | 15.0% | 5.0% | 0.0% |
| 16. | Co and Extra Curricular (sports & games) facilities give good opportunities for students to explore themselves. | 85.0% | 15.0% | 0.0% | 0.0% |
| 17. | Canteen & Dinning space are adequate. | 73.0% | 27.0% | 0.0% | 0.0% |
| 18. | Quality, Clean drinking water is available. | 80.0% | 18.0% | 2.0% | 0.0% |
| 19. | Toilets/Washrooms are hygienic and well maintained. | 7.0% | 29.0% | 0.0% | 0.0% |
| 20. | The buildings and Class Rooms are accessible to differently abled persons. | 71.0% | 24.0% | 4.0% | 0.0% |
| 21. | Institute is having good hostel and mess facilities. | 85.0% | 15.0% | 0.0% | 0.0% |
| 22. | Institute is having good Gym and Yoga Centers. | 75.0% | 19.0% | 6.0% | 0.0% |
| 23. | Institute is having good transport facilities and is also accessible through public transport. | 86.0% | 14.0% | 0.0% | 0.0% |
| 24. | Campus is green, plastic-free and eco-friendly. | 80.0% | 22.0% | 8.0% | 0.0% |

Dr. M. KATHIRVEL, B.E., M.B.A., M.E., Ph.D.
PRINCIPAL

PSN Institute of Technology and Science,
Melathediyoar, Tirunelveli - 627 152





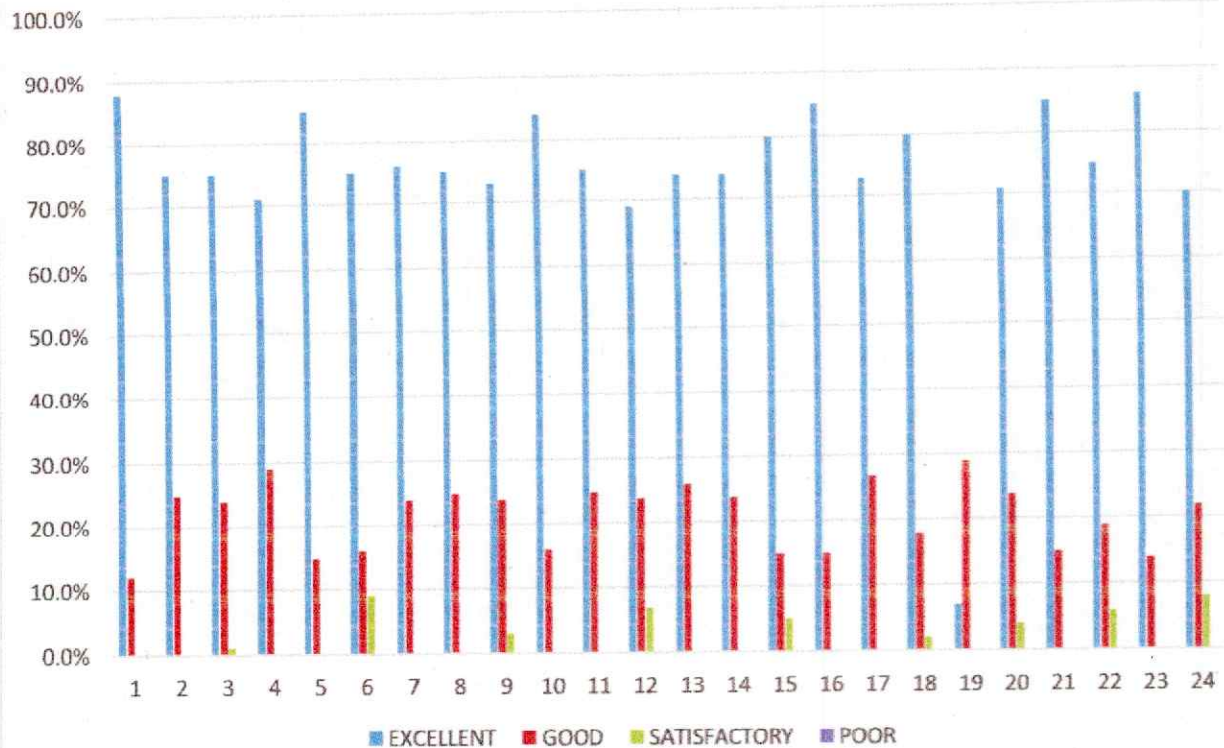
PSN INSTITUTE OF TECHNOLOGY & SCIENCE


Melathediyoar, Tirunelveli - 627 152

[Approved by AICTE & Affiliated to Anna University, NCC 5(TN) Battalion]

ACADEMIC YEAR-2022-23

COMPUTER SCIENCE ENGINEERING STUDENT FEEDBACK FORM ANALYSIS




Dr. M. KATHIRVEL, B.E., M.B.A., M.E., Ph.D.
PRINCIPAL,
PSN Institute of Technology and Science
Melathediyoar, Tirunelveli - 627 152



PSN INSTITUTE OF TECHNOLOGY & SCIENCE

Melathediyoar, Tirunelveli - 627 152

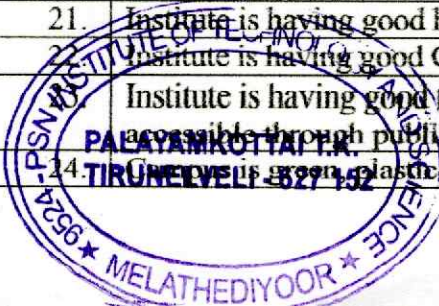
[Approved by AICTE & Affiliated to Anna University, NCC 5(TN) Battalion]

ACADEMIC YEAR-2022-23

ELECTRICAL AND ELECTRONICS STUDENT FEEDBACK ANALYSIS

| S.NO | PARAMETERS | 4 | 3 | 2 | 1 |
|------------------------------|--|-----|-----|----|-------|
| QUESTIONS ON ACADEMIC | | | | | |
| 1. | Teachers take classes regularly, cover the syllabus with clear explanations on all topics | 79% | 21% | 0% | 0% |
| 2. | Teachers clarify students' queries inside and outside the classes. | 76% | 24% | 0% | 0% |
| 3. | Teachers mentor students on regular basis and motivate them to focus on studies, co and extra-curricular activities. | 73% | 26% | 1% | 0% |
| 4. | Teachers organize guest lecturers/ seminars/ workshops/ internships/ field visits/ projects at Industries on regular basis. | 79% | 21% | 0% | 0% |
| 5. | Classrooms and Labs are clean and neat and enable quality learning. | 75% | 25% | 0% | 0% |
| 6. | Laboratory experiments enable effective learning and understanding of concepts and experiments. | 79% | 15% | 6% | 0% |
| 7. | Equipment and Computers are adequate and meet students' requirements. | 87% | 13% | 0% | 0% |
| 8. | Internal tests and end-semester examinations are periodically conducted towards students' continuous evaluation. | 86% | 14% | 0% | 0% |
| 9. | Students' results and attendance records are transparent and are displayed in notice boards | 71% | 29% | 0% | 0% |
| 10. | Students get additional skills towards employability through value added programs | 65% | 27% | 8% | 0% |
| 11. | Teachers practice Outcome Based Education and enable Course and Program outcomes towards students' knowledge, skills and behavior. | 76% | 24% | 0% | 0% |
| QUESTIONS ON AMBIENCE | | | | | |
| 12. | Library ambience is good for informal and self-learning. | 84% | 16% | 0% | 0% |
| 13. | Library is having good number of text and reference books and additional books for competitive exams. | 73% | 24% | 3% | 0% |
| 14. | Library is having additional resources like eBooks, e-Journals in the Digital Library. | 85% | 15% | 0% | 0% |
| 15. | High speed Internet facilities are available in the Campus. | 87% | 13% | 0% | 0% |
| 16. | Co and Extra Curricular (sports & games) facilities give good opportunities for students to explore themselves. | 66% | 27% | 7% | 0% |
| 17. | Canteen & Dinning space are adequate. | 85% | 15% | 0% | 0% |
| 18. | Quality, Clean drinking water is available. | 80% | 18% | 2% | 0% |
| 19. | Toilets/Washrooms are hygienic and well maintained. | 81% | 19% | 0% | 0% |
| 20. | The buildings and Class Rooms are accessible to differently abled persons. | 83% | 17% | 0% | 0% |
| 21. | Institute is having good hostel and mess facilities. | 84% | 16% | 0% | 0% |
| 22. | Institute is having good Gym and Yoga Centers. | 89% | 21% | 0% | 0% |
| 23. | Institute is having good transport facilities and is also accessible through public transport. | 85% | 11% | 4% | 0% |
| 24. | Institute is green, plastic free and eco-friendly. | 88% | 12% | 0% | 0.00% |

Dr. M. KATHIRAVEL, B.E., MBA, M.E., PhD.
PRINCIPAL,
PSN Institute of Technology and Science
Melathediyoar, Tirunelveli - 627 152





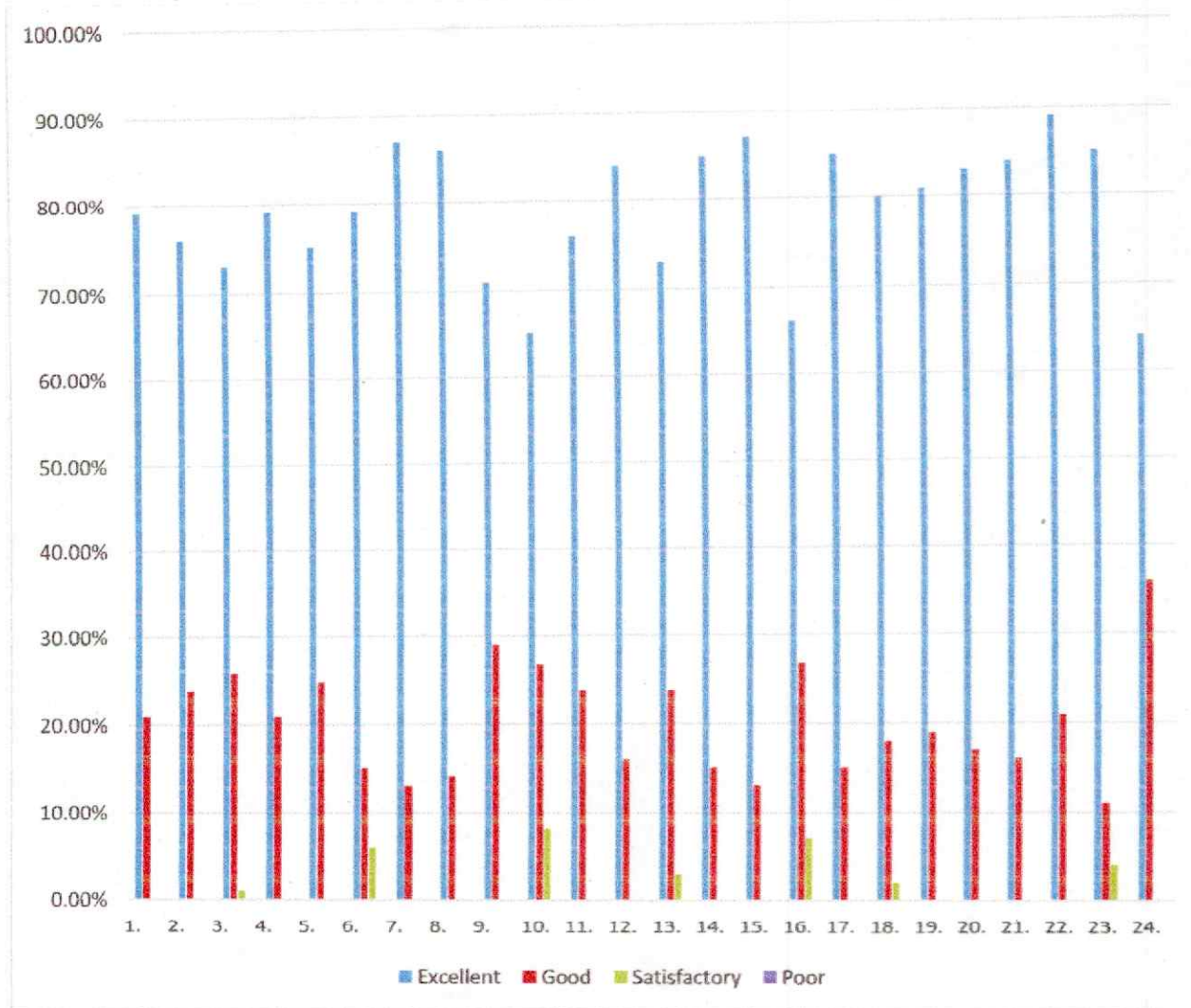
PSN INSTITUTE OF TECHNOLOGY & SCIENCE

Melathediyoar, Tirunelveli - 627 152

[Approved by AICTE & Affiliated to Anna University, NCC 5(TN) Battalion]

ACADEMIC YEAR-2022-23

ELECTRICAL AND ELECTRONICS STUDENT FEEDBACK ANALYSIS



Dr. M. KATHIRVEL, B.E., M.B.A., M.E., Ph.D.
PRINCIPAL,
PSN Institute of Technology and Science,
Melathediyoar, Tirunelveli - 627 152



PSN INSTITUTE OF TECHNOLOGY & SCIENCE

Melathediyoar, Tirunelveli - 627 152

[Approved by AICTE & Affiliated to Anna University, NCC 5(TN) Battalion]

ACADEMIC YEAR-2022-23

ELECTRONICS AND COMMUNICATION ENGINEERING **STUDENT FEEDBACK FORM ANALYSIS**

| S.NO | PARAMETERS | 4 | 3 | 2 | 1 |
|------------------------------|--|-----|-----|----|----|
| QUESTIONS ON ACADEMIC | | | | | |
| 1. | Teachers take classes regularly, cover the syllabus with clear explanations on all topics | 86% | 12% | 2% | 0% |
| 2. | Teachers clarify students' queries inside and outside the classes. | 76% | 24% | 0% | 0% |
| 3. | Teachers mentor students on regular basis and motivate them to focus on studies, co and extra-curricular activities. | 78% | 21% | 1% | 0% |
| 4. | Teachers organize guest lecturers/ seminars/ workshops/ internships/ field visits/ projects at Industries on regular basis. | 77% | 23% | 0% | 0% |
| 5. | Classrooms and Labs are clean and neat and enable quality learning. | 79% | 21% | 0% | 0% |
| 6. | Laboratory experiments enable effective learning and understanding of concepts and experiments. | 76% | 24% | 0% | 0% |
| 7. | Equipment and Computers are adequate and meet students' requirements. | 85% | 15% | 0% | 0% |
| 8. | Internal tests and end-semester examinations are periodically conducted towards students' continuous evaluation. | 85% | 15% | 0% | 0% |
| 9. | Students' results and attendance records are transparent and are displayed in notice boards | 86% | 14% | 0% | 0% |
| 10. | Students get additional skills towards employability through value added programs | 82% | 18% | 0% | 0% |
| 11. | Teachers practice Outcome Based Education and enable Course and Program outcomes towards students' knowledge, skills and behavior. | 81% | 19% | 0% | 0% |
| QUESTIONS ON AMBIENCE | | | | | |
| 12. | Library ambience is good for informal and self-learning. | 87% | 13% | 0% | 0% |
| 13. | Library is having good number of text and reference books and additional books for competitive exams. | 76% | 24% | 0% | 0% |
| 14. | Library is having additional resources like eBooks, e-Journals in the Digital Library. | 74% | 26% | 0% | 0% |
| 15. | High speed Internet facilities are available in the Campus. | 75% | 25% | 0% | 0% |
| 16. | Co and Extra Curricular (sports & games) facilities give good opportunities for students to explore themselves. | 73% | 27% | 0% | 0% |
| 17. | Canteen & Dinning space are adequate. | 85% | 15% | 0% | 0% |
| 18. | Quality, Clean drinking water is available. | 76% | 24% | 0% | 0% |
| 19. | Toilets/Washrooms are hygienic and well maintained. | 87% | 13% | 0% | 0% |
| 20. | The Buildings and Class Rooms are accessible to differently abled persons. | 71% | 29% | 0% | 0% |
| 21. | Institute is having good hostel and mess facilities. | 89% | 11% | 0% | 0% |
| 22. | Institute is having good Gym and Yoga Centers. | 88% | 12% | 0% | 0% |
| 23. | Institute is having good transport facilities and is also accessible through public transport. | 76% | 24% | 0% | 0% |
| 24. | Campus is green, plastic-free and eco-friendly. | 65% | 31% | 0% | 0% |

Dr. M. KATHIRVEL, B.E., Ph.D.,
Principal,
PSN Institute of Technology and Science,
Melathediyoar, Tirunelveli - 627 152



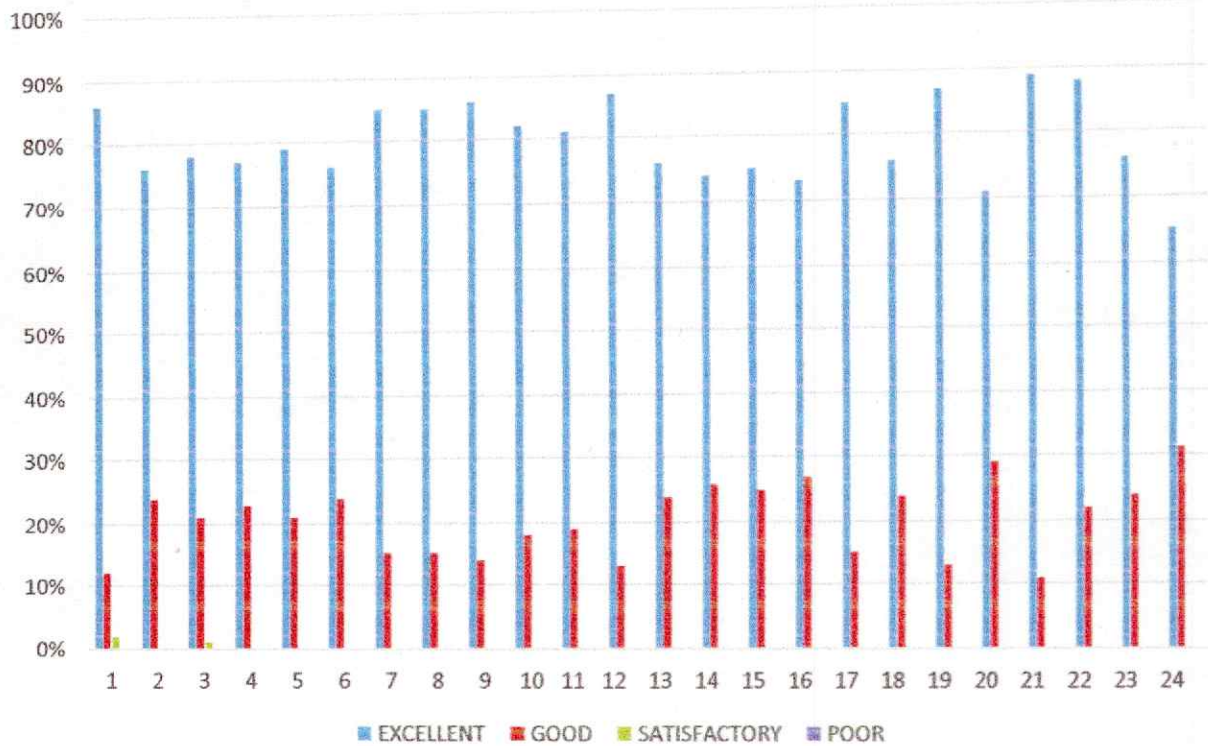
PSN INSTITUTE OF TECHNOLOGY & SCIENCE

Melathediyoar, Tirunelveli - 627 152

[Approved by AICTE & Affiliated to Anna University, NCC 5(TN) Battalion]

ACADEMIC YEAR-2022-23

ELECTRONICS AND COMMUNICATION ENGINEERING STUDENT FEEDBACK ANALYSIS




Dr. M. KATHIRVEL, B.E., M.B.A., M.E., Ph.D.
PRINCIPAL,
PSN Institute of Technology and Science
Melathediyoar, Tirunelveli - 627 152



PSN INSTITUTE OF TECHNOLOGY & SCIENCE

Melathediyoor, Tirunelveli - 627 152

[Approved by AICTE & Affiliated to Anna University, NCC 5(TN) Battalion]

ACADEMIC YEAR-2022-23

MECHANICAL ENGINEERING STUDENT FEEDBACK FORM -ANALYSIS

| S.NO | PARAMETERS | 4 | 3 | 2 | 1 |
|------------------------------|--|-------|-------|-------|------|
| QUESTIONS ON ACADEMIC | | | | | |
| 1. | Teachers take classes regularly, cover the syllabus with clear explanations on all topics | 70.0% | 30.0% | 0.0% | 0.0% |
| 2. | Teachers clarify students' queries inside and outside the classes. | 80.0% | 20.0% | 0.0% | 0.0% |
| 3. | Teachers mentor students on regular basis and motivate them to focus on studies, co and extra-curricular activities. | 60.0% | 45.0% | 0.0% | 0.0% |
| 4. | Teachers organize guest lecturers/ seminars/ workshops/ internships/ field visits/ projects at Industries on regular basis. | 82.7% | 18.3% | 0.0% | 0.0% |
| 5. | Classrooms and Labs are clean and neat and enable quality learning, | 70.0% | 20.0% | 10.0% | 0.0% |
| 6. | Laboratory experiments enable effective learning and understanding of concepts and experiments. | 77.0% | 20.0% | 3.0% | 0.0% |
| 7. | Equipment and Computers are adequate and meet students' requirements. | 75.0% | 25.0% | 0.0% | 0.0% |
| 8. | Internal tests and end-semester examinations are periodically conducted towards students' continuous evaluation. | 82.0% | 18.0% | 0.0% | 0.0% |
| 9. | Students' results and attendance records are transparent and are displayed in notice boards | 73.0% | 17.0% | 0.0% | 0.0% |
| 10. | Students get additional skills towards employability through value added programs | 75.0% | 15.0% | 10.0% | 0.0% |
| 11. | Teachers practice Outcome Based Education and enable Course and Program outcomes towards students' knowledge, skills and behavior. | 70.0% | 30.0% | 0.0% | 0.0% |
| QUESTIONS ON AMBIENCE | | | | | |
| 12. | Library ambience is good for informal and self-learning. | 80.0% | 20.0% | 0.0% | 0.0% |
| 13. | Library is having good number of text and reference books and additional books for competitive exams. | 60.0% | 45.0% | 0.0% | 0.0% |
| 14. | Library is having additional resources like eBooks, e-Journals in the Digital Library. | 80.0% | 20.0% | 0.0% | 0.0% |
| 15. | High speed Internet facilities are available in the Campus. | 60.0% | 40.0% | 0.0% | 0.0% |
| 16. | Co and Extra Curricular (sports & games) facilities give good opportunities for students to explore themselves. | 70.0% | 30.0% | 0.0% | 0.0% |
| 17. | Canteen & Dinning space are adequate. | 88.0% | 12.0% | 0.0% | 0.0% |
| 18. | Quality, Clean drinking water is available. | 69.3% | 30.1% | 1.0% | 0.0% |
| 19. | Toilets/Washrooms are hygienic and well maintained. | 73.0% | 27.0% | 0.0% | 0.0% |
| 20. | The buildings and Class Rooms are accessible to differently abled persons. | 80.0% | 20.0% | 0.0% | 0.0% |
| 21. | Institute is having good hostel and mess facilities. | 60.0% | 30.0% | 10.0% | 0.0% |
| 22. | Institute is having good Gym and Yoga Centers. | 80.0% | 20.0% | 0.0% | 0.0% |
| 23. | Institute is having good transport facilities and is also accessible through public transport. | 80.0% | 20.0% | 0.0% | 0.0% |
| 24. | Institute is having good transport facilities and is also accessible through public transport. | 80.0% | 20.0% | 0.0% | 0.0% |
| 25. | Institute is having good transport facilities and is also accessible through public transport. | 80.0% | 20.0% | 0.0% | 0.0% |
| 26. | Institute is having good transport facilities and is also accessible through public transport. | 80.0% | 20.0% | 0.0% | 0.0% |
| 27. | Institute is having good transport facilities and is also accessible through public transport. | 80.0% | 20.0% | 0.0% | 0.0% |
| 28. | Institute is having good transport facilities and is also accessible through public transport. | 80.0% | 20.0% | 0.0% | 0.0% |
| 29. | Institute is having good transport facilities and is also accessible through public transport. | 80.0% | 20.0% | 0.0% | 0.0% |
| 30. | Institute is having good transport facilities and is also accessible through public transport. | 80.0% | 20.0% | 0.0% | 0.0% |
| 31. | Institute is having good transport facilities and is also accessible through public transport. | 80.0% | 20.0% | 0.0% | 0.0% |
| 32. | Institute is having good transport facilities and is also accessible through public transport. | 80.0% | 20.0% | 0.0% | 0.0% |
| 33. | Institute is having good transport facilities and is also accessible through public transport. | 80.0% | 20.0% | 0.0% | 0.0% |
| 34. | Institute is having good transport facilities and is also accessible through public transport. | 80.0% | 20.0% | 0.0% | 0.0% |
| 35. | Institute is having good transport facilities and is also accessible through public transport. | 80.0% | 20.0% | 0.0% | 0.0% |
| 36. | Institute is having good transport facilities and is also accessible through public transport. | 80.0% | 20.0% | 0.0% | 0.0% |
| 37. | Institute is having good transport facilities and is also accessible through public transport. | 80.0% | 20.0% | 0.0% | 0.0% |
| 38. | Institute is having good transport facilities and is also accessible through public transport. | 80.0% | 20.0% | 0.0% | 0.0% |
| 39. | Institute is having good transport facilities and is also accessible through public transport. | 80.0% | 20.0% | 0.0% | 0.0% |
| 40. | Institute is having good transport facilities and is also accessible through public transport. | 80.0% | 20.0% | 0.0% | 0.0% |
| 41. | Institute is having good transport facilities and is also accessible through public transport. | 80.0% | 20.0% | 0.0% | 0.0% |
| 42. | Institute is having good transport facilities and is also accessible through public transport. | 80.0% | 20.0% | 0.0% | 0.0% |
| 43. | Institute is having good transport facilities and is also accessible through public transport. | 80.0% | 20.0% | 0.0% | 0.0% |
| 44. | Institute is having good transport facilities and is also accessible through public transport. | 80.0% | 20.0% | 0.0% | 0.0% |
| 45. | Institute is having good transport facilities and is also accessible through public transport. | 80.0% | 20.0% | 0.0% | 0.0% |
| 46. | Institute is having good transport facilities and is also accessible through public transport. | 80.0% | 20.0% | 0.0% | 0.0% |
| 47. | Institute is having good transport facilities and is also accessible through public transport. | 80.0% | 20.0% | 0.0% | 0.0% |
| 48. | Institute is having good transport facilities and is also accessible through public transport. | 80.0% | 20.0% | 0.0% | 0.0% |
| 49. | Institute is having good transport facilities and is also accessible through public transport. | 80.0% | 20.0% | 0.0% | 0.0% |
| 50. | Institute is having good transport facilities and is also accessible through public transport. | 80.0% | 20.0% | 0.0% | 0.0% |

Dr. M. KATHIRVELU, M.B.A., M.C., P.D.
PRINCIPAL,
PSN Institute of Technology and Science
Melathediyoor, Tirunelveli - 627 152





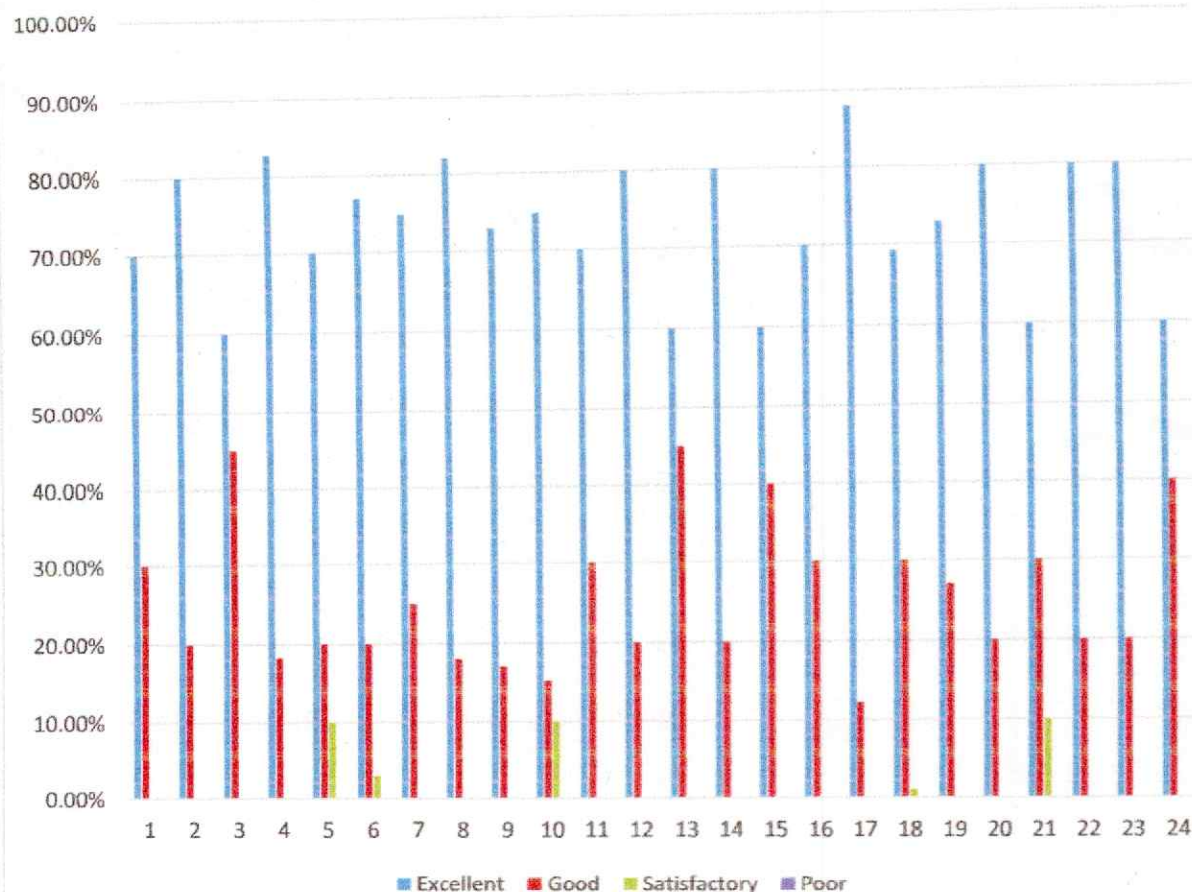
PSN INSTITUTE OF TECHNOLOGY & SCIENCE

Melathediyoor, Tirunelveli - 627 152

[Approved by AICTE & Affiliated to Anna University, NCC 5(TN) Battalion]

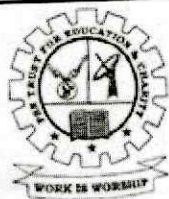
ACADEMIC YEAR-2022-23

MECHANICAL ENGINEERING STUDENT'S FEEDBACK ANALYSIS



Dr. M. KATHIRVEL, B.E., M.B.A., M.E., Ph.D.
PRINCIPAL,

PSN Institute of Technology and Science
Melathediyoor, Tirunelveli - 627 152



PSN INSTITUTE OF TECHNOLOGY & SCIENCE

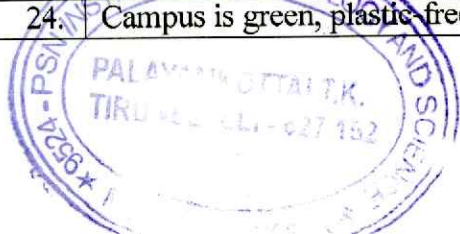
Melathediyoar, Tirunelveli - 627 152

[Approved by AICTE & Affiliated to Anna University, NCC 5(TN) Battalion]

ACADEMIC YEAR-2022-23

MECHATRONICS ENGINEERING STUDENT FEEDBACK FORM - ANALYSIS

| S.NO | PARAMETERS | 4 | 3 | 2 | 1 |
|-----------------------|--|-------|-------|-------|------|
| QUESTIONS ON ACADEMIC | | | | | |
| 1. | Teachers take classes regularly, cover the syllabus with clear explanations on all topics | 70.0% | 30.0% | 0.0% | 0.0% |
| 2. | Teachers clarify students' queries inside and outside the classes. | 80.0% | 20.0% | 0.0% | 0.0% |
| 3. | Teachers mentor students on regular basis and motivate them to focus on studies, co and extra-curricular activities. | 60.0% | 45.0% | 0.0% | 0.0% |
| 4. | Teachers organize guest lecturers/ seminars/ workshops/ internships/ field visits/ projects at Industries on regular basis. | 82.7% | 18.3% | 0.0% | 0.0% |
| 5. | Classrooms and Labs are clean and neat and enable quality learning, | 70.0% | 20.0% | 10.0% | 0.0% |
| 6. | Laboratory experiments enable effective learning and understanding of concepts and experiments. | 82.0% | 18.0% | 0.0% | 0.0% |
| 7. | Equipment and Computers are adequate and meet students' requirements. | 73.0% | 17.0% | 0.0% | 0.0% |
| 8. | Internal tests and end-semester examinations are periodically conducted towards students' continuous evaluation. | 75.0% | 15.0% | 10.0% | 0.0% |
| 9. | Students' results and attendance records are transparent and are displayed in notice boards | 70.0% | 30.0% | 0.0% | 0.0% |
| 10. | Students get additional skills towards employability through value added programs | 80.0% | 20.0% | 0.0% | 0.0% |
| 11. | Teachers practice Outcome Based Education and enable Course and Program outcomes towards students' knowledge, skills and behavior. | 60.0% | 45.0% | 0.0% | 0.0% |
| QUESTIONS ON AMBIENCE | | | | | |
| 12. | Library ambience is good for informal and self-learning. | 80.0% | 20.0% | 0.0% | 0.0% |
| 13. | Library is having good number of text and reference books and additional books for competitive exams. | 60.0% | 40.0% | 0.0% | 0.0% |
| 14. | Library is having additional resources like eBooks, e-Journals in the Digital Library. | 80.0% | 14.0% | 6.0% | 0.0% |
| 15. | High speed Internet facilities are available in the Campus. | 60.0% | 40.0% | 0.0% | 0.0% |
| 16. | Co and Extra Curricular (sports & games) facilities give good opportunities for students to explore themselves. | 70.0% | 23.0% | 7.0% | 0.0% |
| 17. | Canteen & Dinning space are adequate. | 75.0% | 20.0% | 5.0% | 0.0% |
| 18. | Quality, Clean drinking water is available. | 70.0% | 30.0% | 0.0% | 0.0% |
| 19. | Toilets/Washrooms are hygienic and well maintained. | 78.6% | 14.3% | 7.1% | 0.0% |
| 20. | The buildings and Class Rooms are accessible to differently abled persons. | 71.4% | 28.6% | 0.0% | 0.0% |
| 21. | Institute is having good hostel and mess facilities. | 75.0% | 25.0% | 0.0% | 0.0% |
| 22. | Institute is having good Gym and Yoga Centers. | 80.0% | 14.0% | 6.0% | 0.0% |
| 23. | Institute is having good transport facilities and is also accessible through public transport. | 70.0% | 23.0% | 7.0% | 0.0% |
| 24. | Campus is green, plastic-free and eco-friendly. | 60.0% | 40.0% | 0.0% | 0.0% |



Dr. M. KATHIRVEL, B.E., M.B.A., M.E., Ph.D.
PRINCIPAL,
PSN Institute of Technology and Science
Melathediyoar, Tirunelveli - 627 152



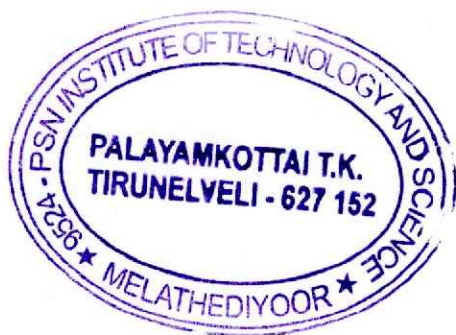
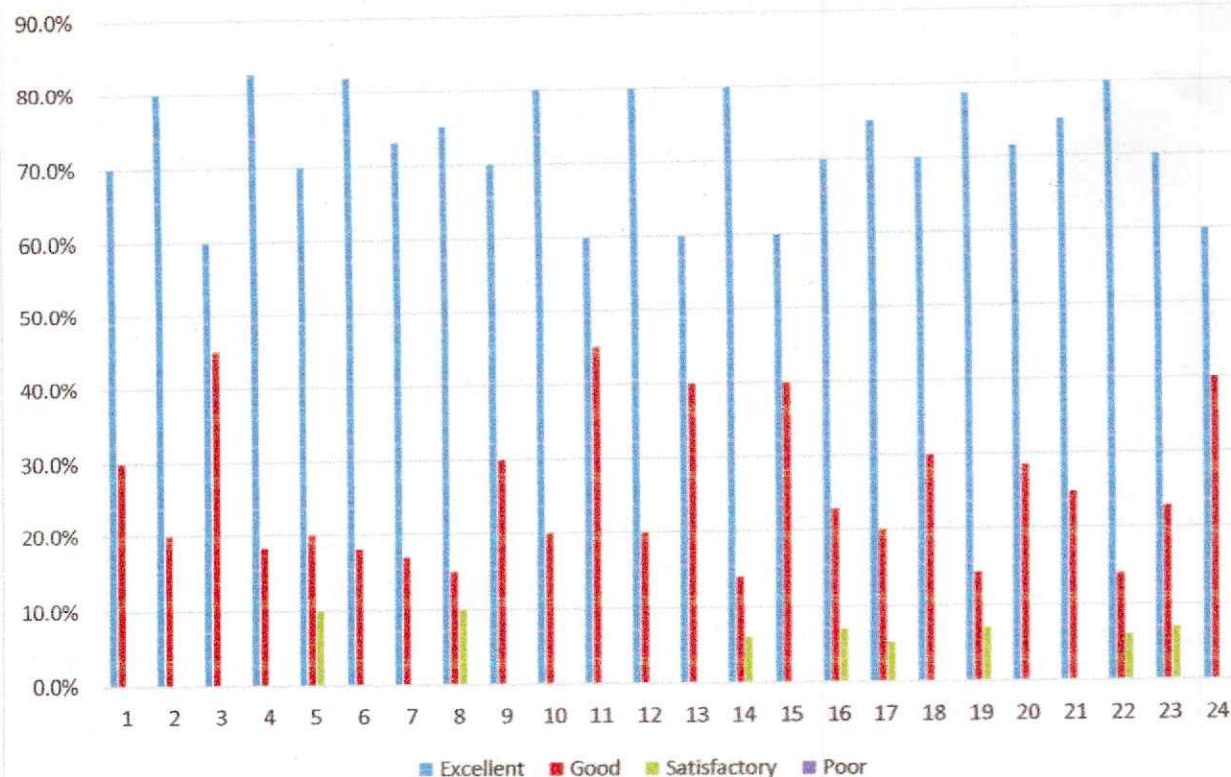
PSN INSTITUTE OF TECHNOLOGY & SCIENCE


Melathediyoor, Tirunelveli - 627 152

[Approved by AICTE & Affiliated to Anna University, NCC 5(TN) Battalion]

ACADEMIC YEAR-2022-23

MECHATRONICS ENGINEERING STUDENT FEEDBACK ANALYSIS




Dr. M. KATHIRVEL B.E., M.B.A., M.E., Ph.D.
PRINCIPAL,
PSN Institute of Technology and Science
Melathediyoor, Tirunelveli - 627 152



PSN INSTITUTE OF TECHNOLOGY & SCIENCE

Melathediyoar, Tirunelveli - 627 152

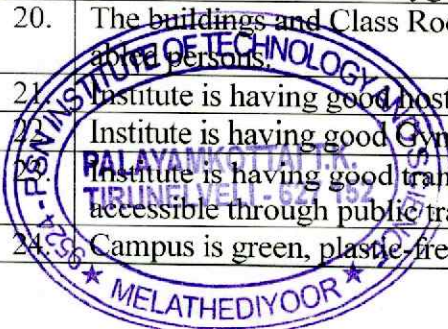
[Approved by AICTE & Affiliated to Anna University, NCC 5(TN) Battalion]

ACADEMIC YEAR-2022-23

MECHANICAL AND AUTOMATION ENGINEERING STUDENT

FEEDBACK-ANALYSIS

| S.NO | PARAMETERS | 4 | 3 | 2 | 1 |
|------------------------------|--|-------|-------|-------|------|
| QUESTIONS ON ACADEMIC | | | | | |
| 1. | Teachers take classes regularly, cover the syllabus with clear explanations on all topics | 80.0% | 20.0% | 0.0% | 0.0% |
| 2. | Teachers clarify students' queries inside and outside the classes. | 60.0% | 40.0% | 0.0% | 0.0% |
| 3. | Teachers mentor students on regular basis and motivate them to focus on studies, co and extra-curricular activities. | 70.0% | 30.0% | 0.0% | 0.0% |
| 4. | Teachers organize guest lecturers/ seminars/ workshops/ internships/ field visits/ projects at Industries on regular basis. | 88.0% | 12.0% | 0.0% | 0.0% |
| 5. | Classrooms and Labs are clean and neat and enable quality learning. | 69.3% | 30.1% | 1.0% | 0.0% |
| 6. | Laboratory experiments enable effective learning and understanding of concepts and experiments. | 73.0% | 27.0% | 0.0% | 0.0% |
| 7. | Equipment and Computers are adequate and meet students' requirements. | 80.0% | 20.0% | 0.0% | 0.0% |
| 8. | Internal tests and end-semester examinations are periodically conducted towards students' continuous evaluation. | 60.0% | 30.0% | 10.0% | 0.0% |
| 9. | Students' results and attendance records are transparent and are displayed in notice boards | 80.0% | 20.0% | 0.0% | 0.0% |
| 10. | Students get additional skills towards employability through value added programs | 75.0% | 20.0% | 5.0% | 0.0% |
| 11. | Teachers practice Outcome Based Education and enable Course and Program outcomes towards students' knowledge, skills and behavior. | 75.0% | 25.0% | 0.0% | 0.0% |
| QUESTIONS ON AMBIENCE | | | | | |
| 12. | Library ambience is good for informal and self-learning. | 80.0% | 14.0% | 6.0% | 0.0% |
| 13. | Library is having good number of text and reference books and additional books for competitive exams. | 60.0% | 40.0% | 0.0% | 0.0% |
| 14. | Library is having additional resources like eBooks, e-Journals in the Digital Library. | 70.0% | 23.0% | 7.0% | 0.0% |
| 15. | High speed Internet facilities are available in the Campus. | 75.0% | 20.0% | 5.0% | 0.0% |
| 16. | Co and Extra Curricular (sports & games) facilities give good opportunities for students to explore themselves. | 70.0% | 30.0% | 0.0% | 0.0% |
| 17. | Canteen & Dinning space are adequate. | 80.0% | 20.0% | 0.0% | 0.0% |
| 18. | Quality, Clean drinking water is available. | 60.0% | 45.0% | 0.0% | 0.0% |
| 19. | Toilets/Washrooms are hygienic and well maintained. | 82.7% | 18.3% | 0.0% | 0.0% |
| 20. | The buildings and Class Rooms are accessible to differently | 70.0% | 20.0% | 10.0% | 0.0% |
| 21. | Institute is having good hostel and mess facilities. | 77.0% | 20.0% | 3.0% | 0.0% |
| 22. | Institute is having good Gym and Yoga Centers. | 75.0% | 25.0% | 0.0% | 0.0% |
| 23. | Institute is having good transport facilities and is also accessible through public transport. | 82.0% | 18.0% | 0.0% | 0.0% |
| 24. | Campus is green, plastic-free and eco-friendly. | 75.0% | 17.0% | 0.0% | 0.0% |



D.M. KATHIRVEL, B.E., M.B.A., M.E., Ph.D.
 PSN Institute of Technology and Science
 Melathediyoar, Tirunelveli - 627 152



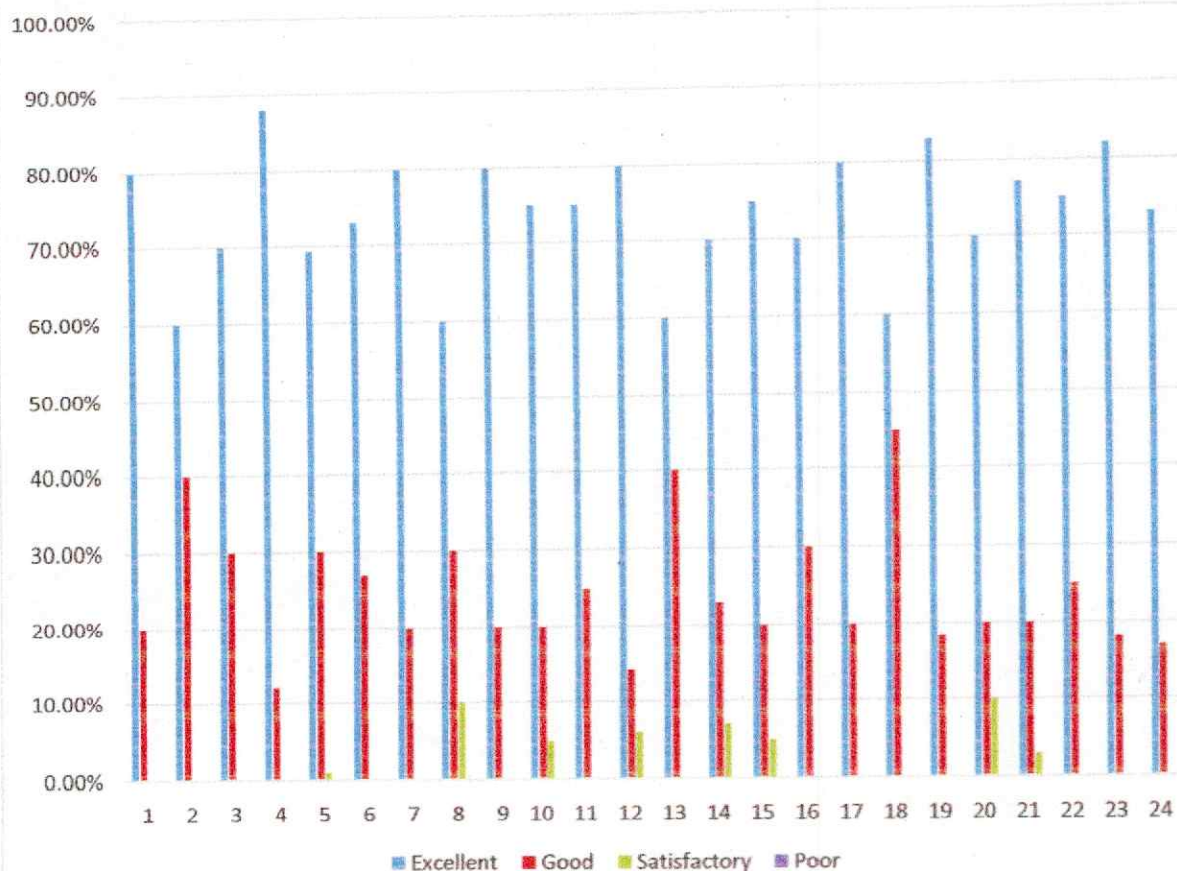
PSN INSTITUTE OF TECHNOLOGY & SCIENCE

Melathediyoar, Tirunelveli - 627 152

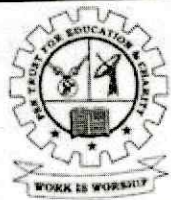
[Approved by AICTE & Affiliated to Anna University, NCC 5(TN) Battalion]

ACADEMIC YEAR-2022-23

MECHANICAL AND AUTOMATION ENGINEERING STUDENT FEEDBACK ANALYSIS




Dr. M. KATHIRVEL B.E., M.B.A., M.E., Ph.D.
PRINCIPAL,
PSN Institute of Technology and Science
Melathediyoar, Tirunelveli - 627 152



PSN INSTITUTE OF TECHNOLOGY & SCIENCE

Melathediyoar, Tirunelveli - 627 152

[Approved by AICTE & Affiliated to Anna University, NCC 5(TN) Battalion]

ACADEMIC YEAR-2022-23

INDUSTRIAL ENGINEERING AND MANAGEMENT

STUDENT FEEDBACK ANALYSIS

| S.NO | PARAMETERS | 4 | 3 | 2 | 1 |
|------------------------------|--|-------|-------|-------|------|
| QUESTIONS ON ACADEMIC | | | | | |
| 1. | Teachers take classes regularly, cover the syllabus with clear explanations on all topics | 70.0% | 30.0% | 0.0% | 0.0% |
| 2. | Teachers clarify students' queries inside and outside the classes. | 80.0% | 20.0% | 0.0% | 0.0% |
| 3. | Teachers mentor students on regular basis and motivate them to focus on studies, co and extra-curricular activities. | 60.0% | 40.0% | 0.0% | 0.0% |
| 4. | Teachers organize guest lecturers/ seminars/ workshops/ internships/ field visits/ projects at Industries on regular basis. | 82% | 18% | 0.0% | 0.0% |
| 5. | Classrooms and Labs are clean and neat and enable quality learning, | 70.0% | 20.0% | 10.0% | 0.0% |
| 6. | Laboratory experiments enable effective learning and understanding of concepts and experiments. | 77.0% | 20.0% | 3.0% | 0.0% |
| 7. | Equipment and Computers are adequate and meet students' requirements. | 75.0% | 25.0% | 0.0% | 0.0% |
| 8. | Internal tests and end-semester examinations are periodically conducted towards students' continuous evaluation. | 82.0% | 18.0% | 0.0% | 0.0% |
| 9. | Students' results and attendance records are transparent and are displayed in notice boards | 73.0% | 17.0% | 10.0% | 0.0% |
| 10. | Students get additional skills towards employability through value added programs | 50.0% | 50.0% | 0.0% | 0.0% |
| 11. | Teachers practice Outcome Based Education and enable Course and Program outcomes towards students' knowledge, skills and behavior. | 79.0% | 11.0% | 10.0% | 0.0% |
| QUESTIONS ON AMBIENCE | | | | | |
| 12. | Library ambience is good for informal and self-learning. | 63.0% | 33.0% | 14.0% | 0.0% |
| 13. | Library is having good number of text and reference books and additional books for competitive exams. | 70.0% | 30.0% | 0.0% | 0.0% |
| 14. | Library is having additional resources like eBooks, e-Journals in the Digital Library. | 60.0% | 40.0% | 0.0% | 0.0% |
| 15. | High speed Internet facilities are available in the Campus. | 50.0% | 30.0% | 20.0% | 0.0% |
| 16. | Co and Extra Curricular (sports & games) facilities give good opportunities for students to explore themselves. | 74.0% | 20.0% | 6.0% | 0.0% |
| 17. | Canteen & Dinning space are adequate. | 80.0% | 20.0% | 0.0% | 0.0% |
| 18. | Quality, Clean drinking water is available. | 60.0% | 40.0% | 0.0% | 0.0% |
| 19. | Toilets/Washrooms are hygienic and well maintained. | 70.0% | 30.0% | 0.0% | 0.0% |
| 20. | The buildings and Class Rooms are accessible to differently abled persons. | 88.0% | 12.0% | 0.0% | 0.0% |
| 21. | Institute is having good hostel and mess facilities. | 69.3% | 30.1% | 1.0% | 0.0% |
| 22. | Institute is having good Gym and Yoga Centers. | 73.0% | 27.0% | 0.0% | 0.0% |
| 23. | Institute is having good transport facilities and is also accessible through public transport. | 80.0% | 20.0% | 0.0% | 0.0% |
| 24. | Campus is green, plastic-free and eco-friendly. | 60% | 30% | 10% | 0.0% |

Dr. M. KATHIRYAN, B.E., M.A., M.Ed.,
Principal
PSN Institute of Technology and Science
Melathediyoar, Tirunelveli - 627 152



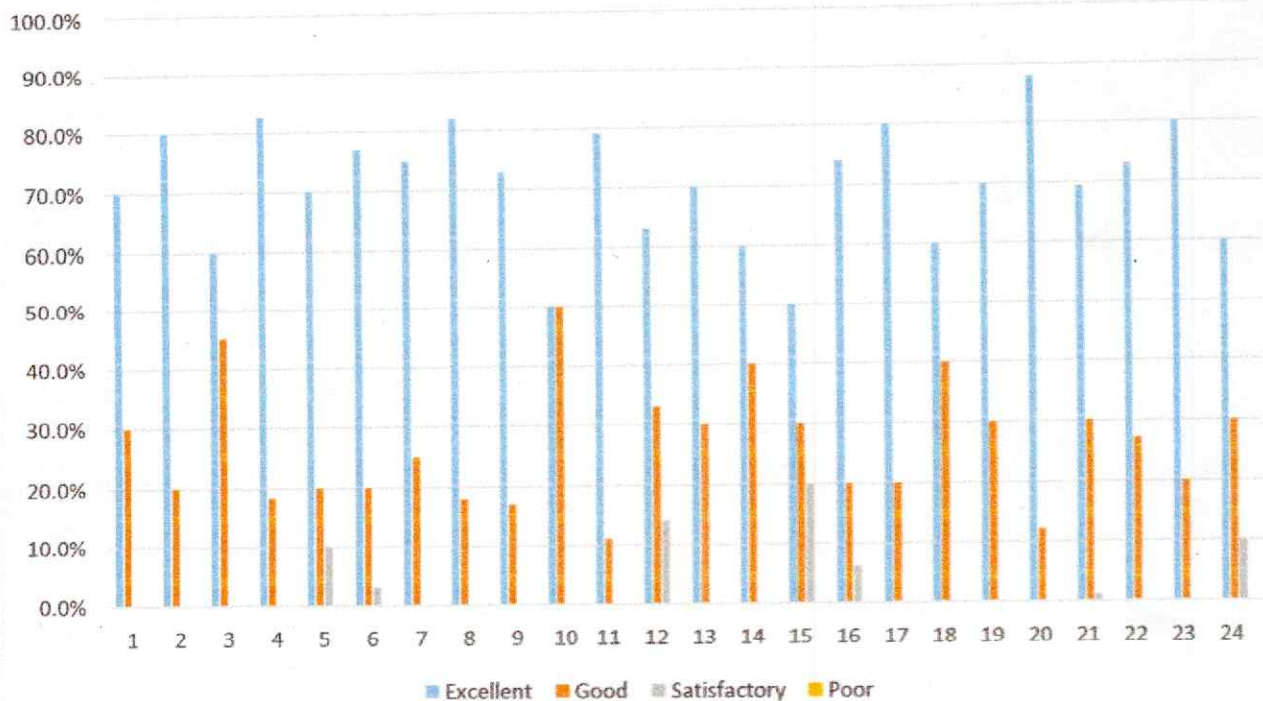
PSN INSTITUTE OF TECHNOLOGY & SCIENCE

Melathediyoar, Tirunelveli - 627 152

[Approved by AICTE & Affiliated to Anna University, NCC 5(TN) Battalion]

ACADEMIC YEAR-2022-23

INDUSTRIAL ENGINEERING AND MANGEMENT STUDENT FEEDBACK ANALYSIS




Dr. M. K. THIRUMEL, B.E., M.B.A., M.E., Ph.D.
PRINCIPAL,
PSN Institute of Technology and Science
Melathediyoar, Tirunelveli - 627 152