

# PSN INSTITUTE OF TECHNOLOGY & SCIENCE

Melathediyoor, Tirunelveli - 627 152

[Approved by AICTE & Affiliated to Anna University, NCC 5(TN) Battalion]

## ACADEMIC YEAR-2022-23

### CIVIL ENGINEERING TEACHER FEEDBACK-ANALYSIS

S.NO	PARAMETERS	4	3	2	1
<b>QUESTIONS ON ACADEMICS</b>					
1.	Teachers have complete academic performance in moulding their students.	80%	15%	5%	0%
2.	Teachers are facilitated with ICT Tools like Laptops, LCD Projectors, SmartBoards, Wireless Internet etc.	76%	20%	4%	0%
3.	Teachers blend additional certification and skill development programs for students, to learn new skills for employability and life-long learning.	83%	17%	0%	0%
4.	Teachers mentor students on regular basis offering counseling/mentoring services for students' excellence and to overcome students' personal and leaning issues.	86%	14%	0%	0%
5.	Academics, co and extra-curricular opportunities and facilities and ambience shaped the character of students' in terms of values, ethics, self-learning and creative attitudes.	79%	20%	1%	0%
6.	Institute has enabled on-line information systems for access to students, parents, faculty and others for upto-date access to information.	75%	20%	5%	0%
7.	Institute promotes sponsored research, research publications, consultancy, faculty developments, patents etc., though faculty motivation and budget provisions.	90%	10%	0%	0%
<b>QUESTIONS ON AMBIENCE</b>					
8.	Class Rooms and Laboratory ambience are good for effective instructional delivery and practice.	85%	15%	0%	0%
9.	Library facilities are good with enormous number of books, eBooks, eJournals etc., for self-learning and research.	72%	28%	0%	0%
10.	The initiatives towards co-curricular activities helped in nurturing natural talents and achieving accolades.	84%	16%	0%	0%
11.	Sports, Games and Gym facilities helped in practicing good health and in participating in inter-institutional competitions..	93%	7%	0%	0%
12.	Canteen, Mess, Dinning space, Hostel Facilities, transport facilities are adequate and good.	87%	13%	0%	0%
13.	Campus environment promotes healthy interaction of students, teachers and other stake-holders.	94%	6%	0%	0%
14.	Inclusive infrastructure meeting the needs of differently-abled stake-holders.	76%	20%	4%	0%
15.	Campus is green, plastic-free and eco-friendly; Neat and clean always; Well maintained.	81%	19%	0%	0%



Dr. M. KATHIRVEL, B.E., M.B.A., M.E., Ph.D.  
PRINCIPAL,  
PSN Institute of Technology and Science  
Melathediyoor, Tirunelveli - 627 152



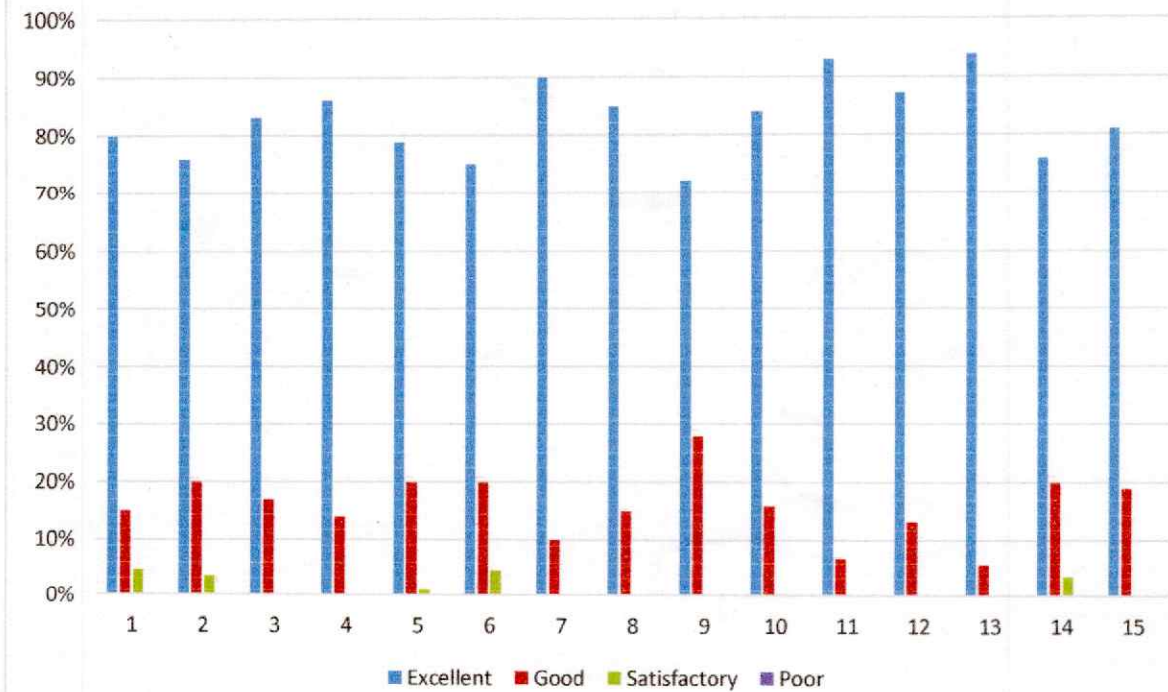
# PSN INSTITUTE OF TECHNOLOGY & SCIENCE

Melathediyoor, Tirunelveli - 627 152

[Approved by AICTE & Affiliated to Anna University, NCC 5(TN) Battalion]

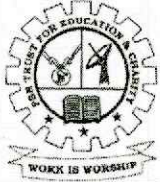
**ACADEMIC YEAR-2022-23**

## CIVIL ENGINEERING TEACHER FEEDBACK-ANALYSIS



*[Signature]*  
Dr. M. KATHIRVEL, B.E., M.B.A., M.E., Ph.D.  
PRINCIPAL,  
PSN Institute of Technology and Science  
Melathediyoor, Tirunelveli - 627 152





# PSN INSTITUTE OF TECHNOLOGY & SCIENCE

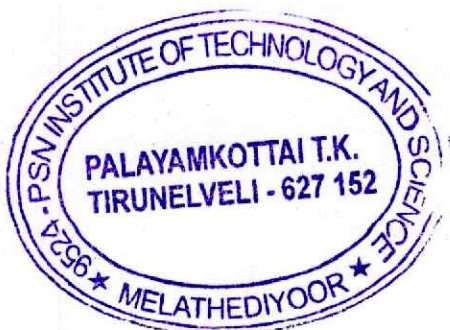
Melathediyoor, Tirunelveli - 627 152

[Approved by AICTE & Affiliated to Anna University, NCC 5(TN) Battalion]

## ACADEMIC YEAR-2022-23

### COMPUTER SCIENCE ENGINEERING TEACHER FEEDBACK-ANALYSIS

S.NO	PARAMETERS	4	3	2	1
<b>QUESTIONS ON ACADEMICS</b>					
1.	Teachers have complete academic performance in moulding their students.	75%	25%	5%	0%
2.	Teachers are facilitated with ICT Tools like Laptops, LCD Projectors, SmartBoards, Wireless Internet etc.	74%	20%	6%	0%
3.	Teachers blend additional certification and skill development programs for students, to learn new skills for employability and life-long learning.	86%	14%	0%	0%
4.	Teachers mentor students on regular basis offering counseling/mentoring services for students' excellence and to overcome students' personal and leaning issues.	74%	26%	0%	0%
5.	Academics, co and extra-curricular opportunities and facilities and ambience shaped the character of students' in terms of values, ethics, self-learning and creative attitudes.	80%	20%	0%	0%
6.	Institute has enabled on-line information systems for access to students, parents, faculty and others for upto-date access to information.	75%	16%	9%	0%
7.	Institute promotes sponsored research, research publications, consultancy, faculty developments, patents etc., though faculty motivation and budget provisions.	77%	23%	0%	0%
<b>QUESTIONS ON AMBIENCE</b>					
8.	Class Rooms and Laboratory ambience are good for effective instructional delivery and practice.	87%	13%	0%	0%
9.	Library facilities are good with enormous number of books, eBooks, eJournals etc., for self-learning and research.	72.8%	18.7%	8.5%	0%
10.	The initiatives towards co-curricular activities helped in nurturing natural talents and achieving accolades.	87.0%	13%	0%	0%
11.	Sports, Games and Gym facilities helped in practicing good health and in participating in inter-institutional competitions..	82%	18%	0%	0%
12.	Canteen, Mess, Dinning space, Hostel Facilities, transport facilities are adequate and good.	75%	25%	0%	0%
13.	Campus environment promotes healthy interaction of students, teachers and other stake-holders.	82.60%	17.40%	0%	0%
14.	Inclusive infrastructure meeting the needs of differently-abled stake-holders.	74%	20%	6%	0%
15.	Campus is green, plastic-free and eco-friendly; Neat and clean always; Well maintained.	93%	7%	0%	0%



  
 Dr. M. KATHIRVEL, B.E., M.B.A., M.E., Ph.D.  
 PRINCIPAL,  
 PSN Institute of Technology and Science  
 Melathediyoor, Tirunelveli - 627 152



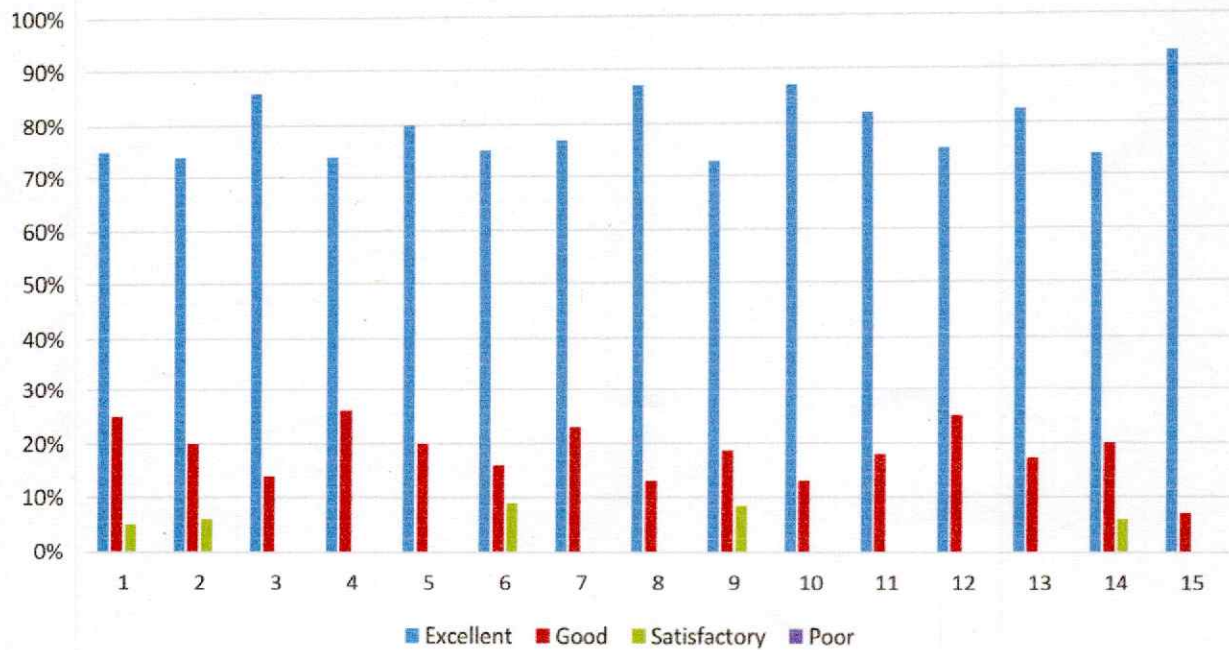
# PSN INSTITUTE OF TECHNOLOGY & SCIENCE

Melathediyoor, Tirunelveli - 627 152

[Approved by AICTE & Affiliated to Anna University, NCC 5(TN) Battalion]

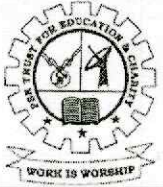
**ACADEMIC YEAR-2022-23**

## COMPUTER SCIENCE ENGINEERING TEACHER FEEDBACK ANALYSIS



  
**Dr. M. KATHIRVEL, B.E., M.B.A., M.E., Ph.D.**  
PRINCIPAL,  
PSN Institute of Technology and Science  
Melathediyoor, Tirunelveli - 627 152





# PSN INSTITUTE OF TECHNOLOGY & SCIENCE

Melathediyoor, Tirunelveli - 627 152

[Approved by AICTE & Affiliated to Anna University, NCC 5(TN) Battalion]

## ACADEMIC YEAR-2022-23

### ELECTRICAL AND ELECTRONICS ENGINEERING TEACHER FEEDBACK- ANALYSIS

S.NO	PARAMETERS	4	3	2	1
<b>QUESTIONS ON ACADEMICS</b>					
1.	Teachers have complete academic performance in moulding their students.	75.0%	16.0%	9%	0%
2.	Teachers are facilitated with ICT Tools like Laptops, LCD Projectors, SmartBoards, Wireless Internet etc.	80.0%	20.0%	0%	0%
3.	Teachers blend additional certification and skill development programs for students, to learn new skills for employability and life-long learning.	73.0%	20.0%	7%	0%
4.	Teachers mentor students on regular basis offering counseling/mentoring services for students' excellence and to overcome students' personal and leaning issues.	74.0%	20.0%	6%	0%
5.	Academics, co and extra-curricular opportunities and facilities and ambience shaped the character of students' in terms of values, ethics, self-learning and creative attitudes.	80.0%	20.0%	0%	0.0%
6.	Institute has enabled on-line information systems for access to students, parents, faculty and others for upto-date access to information.	85.0%	15.0%	0%	0.0%
7.	Institute promotes sponsored research, research publications, consultancy, faculty developments, patents etc., though faculty motivation and budget provisions.	74.0%	20.0%	6%	0.0%
<b>QUESTIONS ON AMBIENCE</b>					
8.	Class Rooms and Laboratory ambience are good for effective instructional delivery and practice.	80.0%	20.0%	0%	0.0%
9.	Library facilities are good with enormous number of books, eBooks, eJournals etc., for self-learning and research.	75.0%	25.0%	0%	0.0%
10.	The initiatives towards co-curricular activities helped in nurturing natural talents and achieving accolades.	80.0%	20.0%	0%	0.0%
11.	Sports, Games and Gym facilities helped in practicing good health and in participating in inter-institutional competitions..	74.0%	20.0%	6%	0.0%
12.	Canteen, Mess, Dinning space, Hostel Facilities, transport facilities are adequate and good.	80.0%	20.0%	0%	0.0%
13.	Campus environment promotes healthy interaction of students, teachers and other stake-holders.	75.0%	16.0%	9%	0.0%
14.	Inclusive infrastructure meeting the needs of differently-abled stake-holders.	78.0%	22.0%	0%	0.0%
15.	Campus is green, plastic-free and eco-friendly; Neat and clean always; Well-maintained.	87.0%	13.0%	0%	0.0%



Dr. M. KATHIRVEL, B.E., M.B.A., M.E., Ph.D.  
PRINCIPAL,  
PSN Institute of Technology and Science  
Melathediyoor, Tirunelveli - 627 152



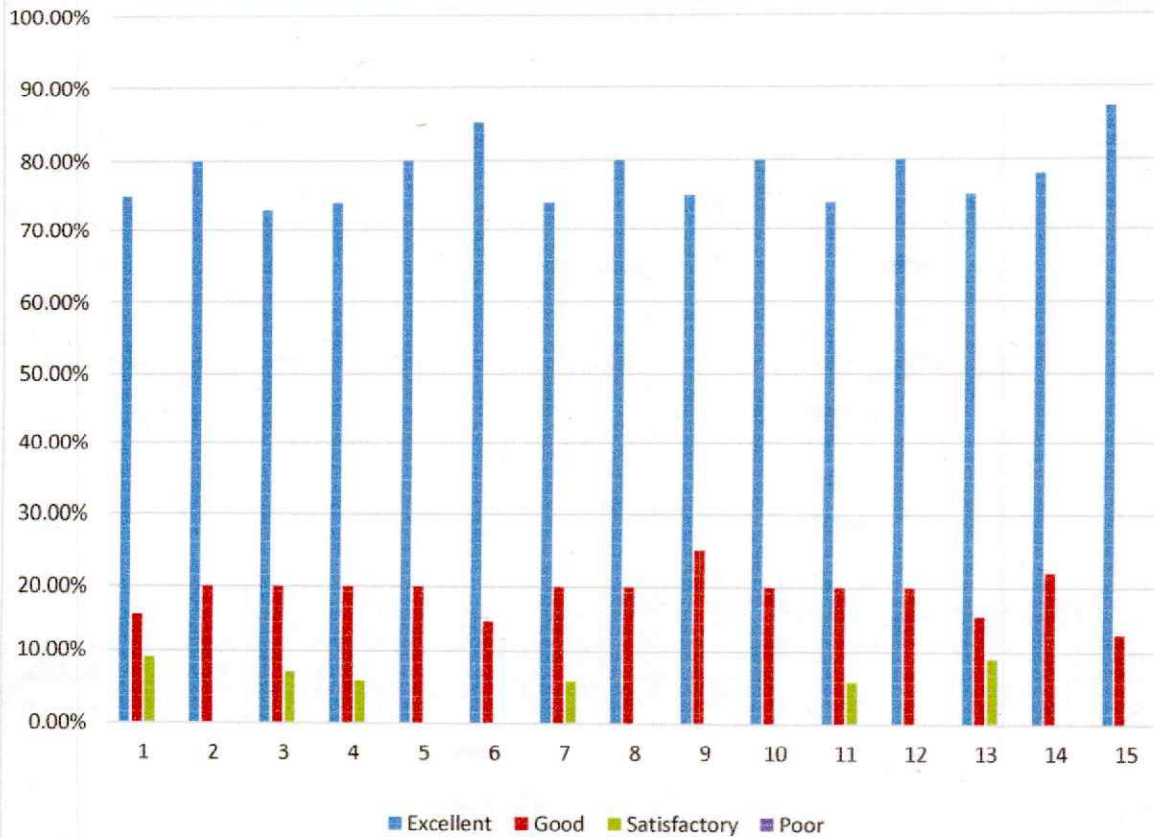
# PSN INSTITUTE OF TECHNOLOGY & SCIENCE

Melathediyoor, Tirunelveli - 627 152

[Approved by AICTE & Affiliated to Anna University, NCC 5(TN) Battalion]

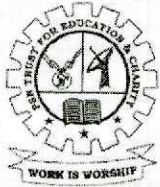
**ACADEMIC YEAR-2022-23**

## ELECTRICAL AND ELECTRONICS ENGINEERING TEACHER FEEDBACK-ANALYSIS



*Dr. M. KATHIRVEL, B.E., M.B.A., M.E., Ph.D.*  
PRINCIPAL,  
PSN Institute of Technology and Science  
Melathediyoor, Tirunelveli - 627 152





# PSN INSTITUTE OF TECHNOLOGY & SCIENCE

Melathediyoor, Tirunelveli - 627 152

[Approved by AICTE & Affiliated to Anna University, NCC 5(TN) Battalion]

## ACADEMIC YEAR-2022-23

### ELECTRONICS AND COMMUNICATION ENGINEERING TEACHER

#### FEEDBACK-ANALYSIS

S.NO	PARAMETERS	4	3	2	1
<b>QUESTIONS ON ACADEMICS</b>					
1.	Teachers have complete academic performance in moulding their students.	70.5%	29.5%	0%	0%
2.	Teachers are facilitated with ICT Tools like Laptops, LCD Projectors, Smart Boards, Wireless Internet etc.	83%	17%	0%	0%
3.	Teachers blend additional certification and skill development programs for students, to learn new skills for employability and life-long learning.	87%	13%	0%	0%
4.	Teachers mentor students on regular basis offering counselling/mentoring services for students' excellence and to overcome students' personal and leaning issues.	89%	7%	4%	0%
5.	Academics, co and extra-curricular opportunities and facilities and ambience shaped the character of students' in terms of values, ethics, self-learning and creative attitudes.	82.6%	17.4%	0%	0%
6.	Institute has enabled on-line information systems for access to students, parents, faculty and others for up to-date access to information.	77.5%	22.5%	0%	0%
7.	Institute promotes sponsored research, research publications, consultancy, faculty developments, patents etc., though faculty motivation and budget provisions.	72.8%	18.7%	8.5%	0%
<b>QUESTIONS ON AMBIENCE</b>					
8.	Class Rooms and Laboratory ambience are good for effective instructional delivery and practice.	77%	23%	0%	0%
9.	Library facilities are good with enormous number of books, eBooks, eJournals etc., for self-learning and research.	86%	14%	0%	0%
10.	The initiatives towards co-curricular activities helped in nurturing natural talents and achieving accolades.	82.5%	11.5%	6%	0%
11.	Sports, Games and Gym facilities helped in practicing good health and in participating in inter-institutional competitions..	89%	7%	4%	0%
12.	Canteen, Mess, Dinning space, Hostel Facilities, transport facilities are adequate and good.	84.2%	12.5%	3.3%	0%
13.	Campus environment promotes healthy interaction of students, teachers and other stake-holders.	83%	17%	0%	0%
14.	Inclusive infrastructure meeting the needs of differently-abled stake-holders.	75%	25%	0%	0%
15.	Campus is green, plastic-free and eco-friendly; Neat and clean always; Well maintained.	74%	26%	0%	0%



  
 Dr. M. KATHIRVELU, B.E., M.B.A., M.E., Ph.D.  
 PRINCIPAL,  
 PSN Institute of Technology and Science  
 Melathediyoor, Tirunelveli - 627 152



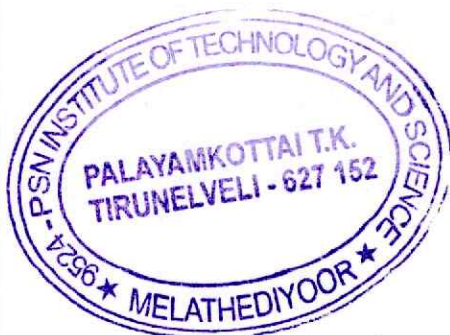
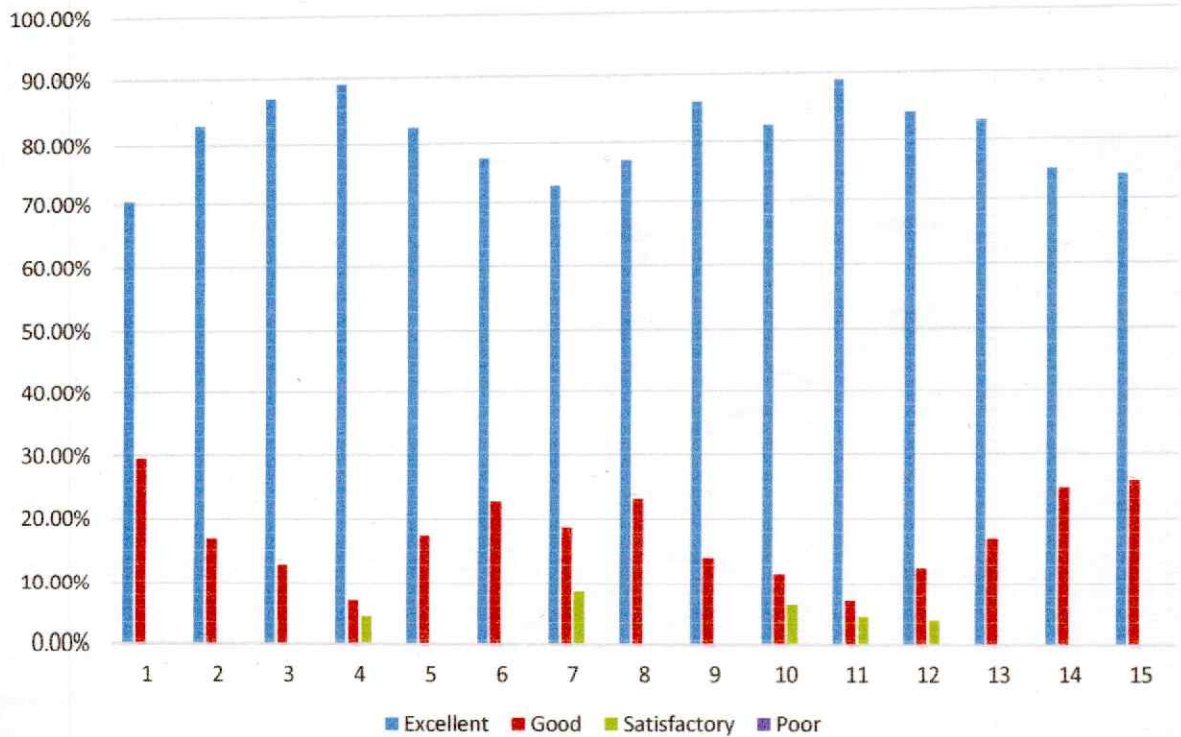
# PSN INSTITUTE OF TECHNOLOGY & SCIENCE

Melathediyoor, Tirunelveli - 627 152

[Approved by AICTE & Affiliated to Anna University, NCC 5(TN) Battalion]

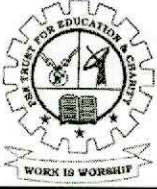
**ACADEMIC YEAR-2022-23**

## ELECTRONICS AND COMMUNICATION ENGINEERING TEACHER FEEDBACK-ANALYSIS



  
Dr. M. KATHIRVEL, B.E., M.B.A., M.E., Ph.D.  
PRINCIPAL,  
PSN Institute of Technology and Science  
Melathediyoor, Tirunelveli - 627 152





# PSN INSTITUTE OF TECHNOLOGY & SCIENCE

Melathedivoor, Tirunelveli - 627 152

[Approved by AICTE & Affiliated to Anna University, NCC 5(TN) Battalion]

## ACADEMIC YEAR-2022-23

### MECHANICAL ENGINEERING TEACHER FEEDBACK-ANALYSIS

S.NO	PARAMETERS	4	3	2	1
<b>QUESTIONS ON ACADEMICS</b>					
1.	Teachers have complete academic performance in moulding their students.	95.4%	5.6%	0.0%	0.0%
2.	Teachers are facilitated with ICT Tools like Laptops, LCD Projectors, SmartBoards, Wireless Internet etc.	85.6%	10.2%	5.0%	0.0%
3.	Teachers blend additional certification and skill development programs for students, to learn new skills for employability and life-long learning.	80.3%	15.4%	5.0%	0.0%
4.	Teachers mentor students on regular basis offering counseling/mentoring services for students' excellence and to overcome students' personal and leaning issues.	85.1%	15.6%	0.0%	0.0%
5.	Academics, co and extra-curricular opportunities and facilities and ambience shaped the character of students' in terms of values, ethics, self-learning and creative attitudes.	75.2%	25.7%	0.0%	0.0%
6.	Institute has enabled on-line information systems for access to students, parents, faculty and others for upto-date access to information.	80.3%	20.4%	0.0%	0.0%
7.	Institute promotes sponsored research, research publications, consultancy, faculty developments, patents etc., though faculty motivation and budget provisions.	85.8%	10.1%	5.0%	0.0%
<b>QUESTIONS ON AMBIENCE</b>					
8.	Class Rooms and Laboratory ambience are good for effective instructional delivery and practice.	75.1%	25.2%	0.0%	0.0%
9.	Library facilities are good with enormous number of books, eBooks, eJournals etc., for self-learning and research.	75.8%	24.2%	1.1%	0.0%
10.	The initiatives towards co-curricular activities helped in nurturing natural talents and achieving accolades.	80.1%	20.2%	0.0%	0.0%
11.	Sports, Games and Gym facilities helped in practicing good health and in participating in inter-institutional competitions..	80.5%	20.4%	0.0%	0.0%
12.	Canteen, Mess, Dinning space, Hostel Facilities, transport facilities are adequate and good.	80.8%	17.6%	3.5%	0.0%
13.	Campus environment promotes healthy interaction of students, teachers and other stake-holders.	90.5%	10.2%	0.0%	0.0%
14.	Inclusive infrastructure meeting the needs of differently-abled stake-holders.	80.2%	20.2%	0.0%	0.0%
15.	Campus is green, plastic-free and eco-friendly; Neat and clean always.	90.6%	15.2%	3.3%	0.0%



Dr. M. KATHIRVEL, B.E., M.B.A., M.E., Ph.D.  
 PRINCIPAL,  
 PSN Institute of Technology and Science  
 Melathedivoor, Tirunelveli - 627 152

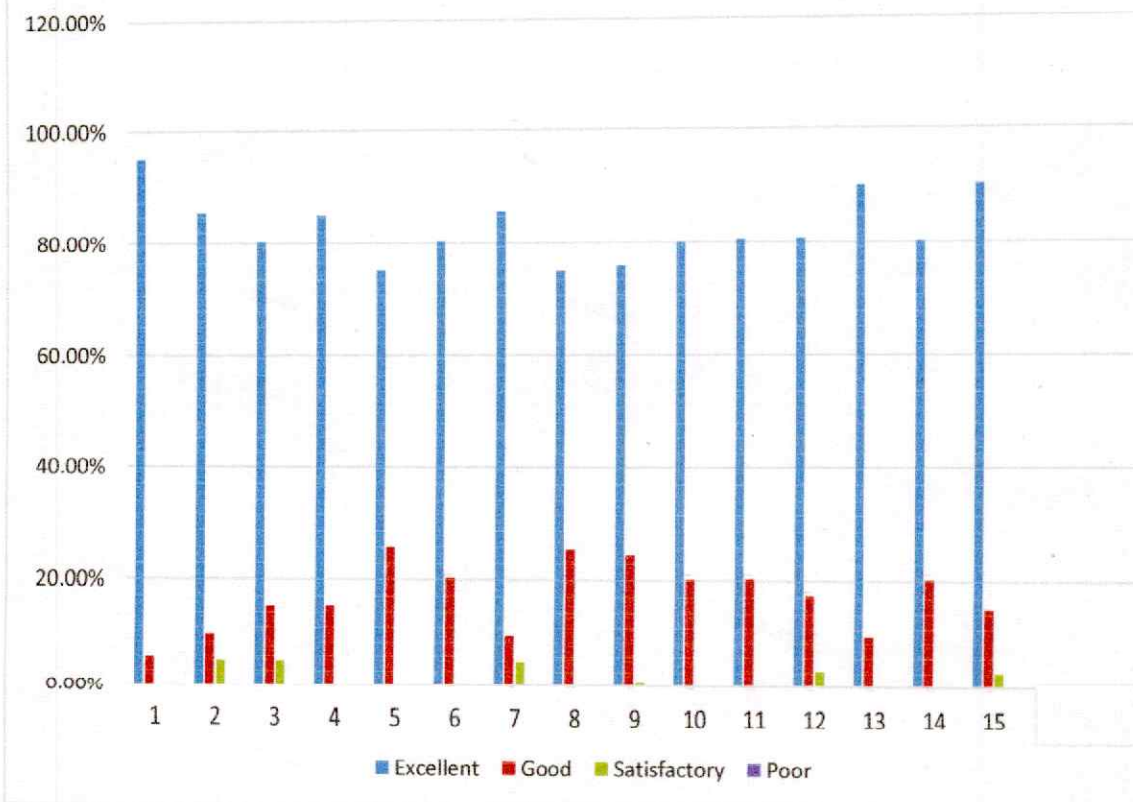


# PSN INSTITUTE OF TECHNOLOGY & SCIENCE

Melathediyoor, Tirunelveli - 627 152

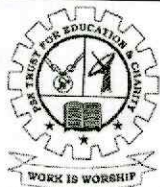
[Approved by AICTE & Affiliated to Anna University, NCC 5(TN) Battalion]

## MECHANICAL ENGINEERING- TEACHER FEEDBACK ANALYSIS



*Dr. M. KATHIRVEL*  
Dr. M. KATHIRVEL, B.E., M.B.A., M.E., Ph.D.  
PRINCIPAL,  
PSN Institute of Technology and Science  
Melathediyoor, Tirunelveli - 627 152





# PSN INSTITUTE OF TECHNOLOGY & SCIENCE

Melathediyoor, Tirunelveli - 627 152

[Approved by AICTE & Affiliated to Anna University, NCC 5(TN) Battalion]

## ACADEMIC YEAR-2022-23

### MECHATRONICS ENGINEERING TEACHER FEEDBACK ANALYSIS

S.NO	PARAMETERS	4	3	2	1
<b>QUESTIONS ON ACADEMICS</b>					
1.	Teachers have complete academic performance in moulding their students.	75.4%	25.6%	0.0%	0.0%
2.	Teachers are facilitated with ICT Tools like Laptops, LCD Projectors, Smart Boards, Wireless Internet etc.	80.4%	20.6%	0.0%	0.0%
3.	Teachers blend additional certification and skill development programs for students, to learn new skills for employability and life-long learning.	85.2%	14.7%	1.1%	0.0%
4.	Teachers mentor students on regular basis offering counselling/mentoring services for students' excellence and to overcome students' personal and leaning issues.	80.0%	20.0%	0.0%	0.0%
5.	Academics, co and extra-curricular opportunities and facilities and ambience shaped the character of students' in terms of values, ethics, self-learning and creative attitudes.	79.6%	21.1%	0.3%	0.0%
6.	Institute has enabled on-line information systems for access to students, parents, faculty and others for upto-date access to information.	84.4%	16.3%	0.2%	0.0%
7.	Institute promotes sponsored research, research publications, consultancy, faculty developments, patents etc., though faculty motivation and budget provisions.	90.4%	6.2%	4.3%	0.0%
<b>QUESTIONS ON AMBIENCE</b>					
8.	Class Rooms and Laboratory ambience are good for effective instructional delivery and practice.	83.3%	17.3%	0.3%	0.0%
9.	Library facilities are good with enormous number of books, eBooks, eJournals etc., for self-learning and research.	80.6%	14.2%	6.2%	0.0%
10.	The initiatives towards co-curricular activities helped in nurturing natural talents and achieving accolades.	91.1%	9.9%	0.0%	0.0%
11.	Sports, Games and Gym facilities helped in practicing good health and in participating in inter-institutional competitions..	74.6%	25.3%	1.1%	0.0%
12.	Canteen, Mess, Dinning space, Hostel Facilities, transport facilities are adequate and good.	87.3%	20.3%	3.3%	0.0%
13.	Campus environment promotes healthy interaction of students, teachers and other stake-holders.	78.7%	20.2%	2.1%	0.0%
14.	Inclusive infrastructure meeting the needs of differently-abled stake-holders.	80.3%	17.7%	3.0%	0.0%
15.	Campus is green, plastic-free and eco-friendly; Neat and clean always, well maintained.	80.3%	15.6%	5.1%	0.0%



Dr. M. KATHIRVEL, B.E., M.B.A., M.E., Ph.D.  
 PRINCIPAL,  
 PSN Institute of Technology and Science  
 Melathediyoor, Tirunelveli - 627 152



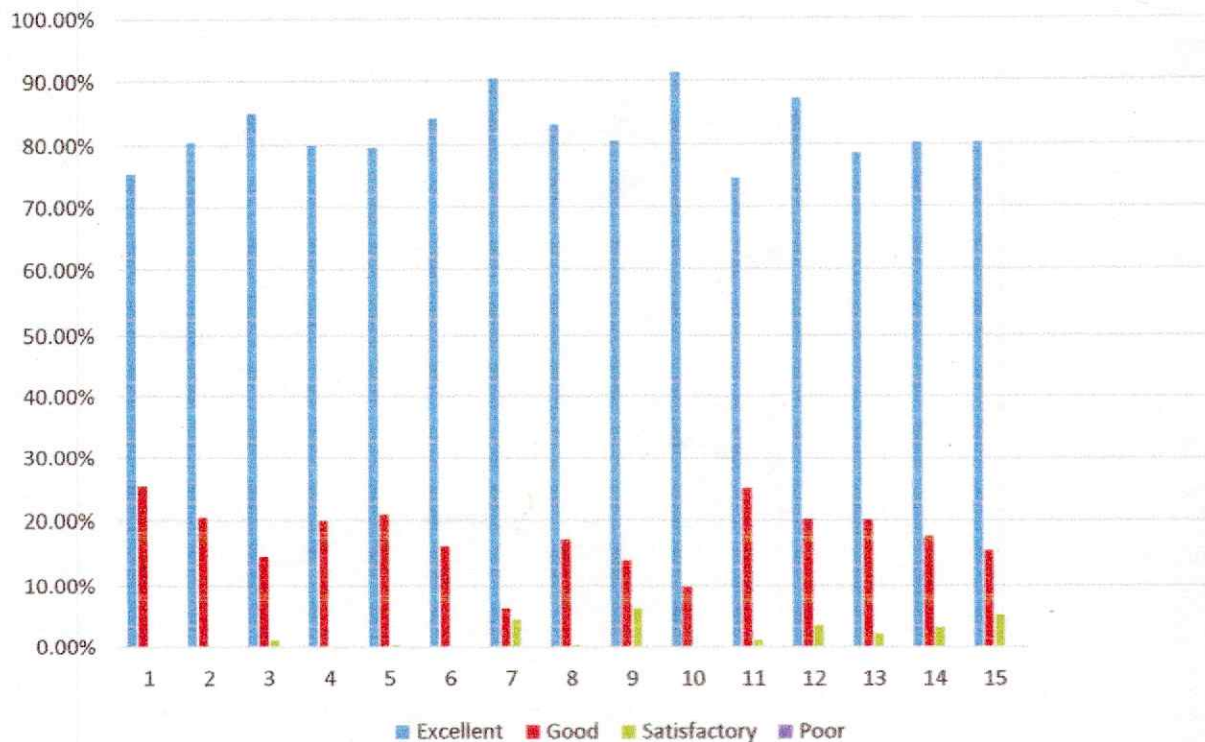
# PSN INSTITUTE OF TECHNOLOGY & SCIENCE

Melathediyoor, Tirunelveli - 627 152

[Approved by AICTE & Affiliated to Anna University, NCC 5(TN) Battalion]

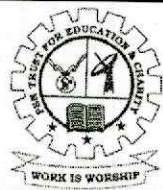
**ACADEMIC YEAR-2022-23**

## MECHATRONICS ENGINEERING- TEACHER FEEDBACK ANALYSIS



  
Dr. M. KATHIRVEL, BE., M.B.A., M.E., Ph.D.  
PRINCIPAL,  
PSN Institute of Technology and Science  
Melathediyoor, Tirunelveli - 627 152





# PSN INSTITUTE OF TECHNOLOGY & SCIENCE

Melathediyoor, Tirunelveli - 627 152

[Approved by AICTE & Affiliated to Anna University, NCC 5(TN) Battalion]

## ACADEMIC YEAR-2022-23

### MECHANICAL AND AUTOMATION ENGINEERING TEACHER FEEDBACK-ANALYSIS

S.NO	PARAMETERS	4	3	2	1
<b>QUESTIONS ON ACADEMICS</b>					
1.	Teachers have complete academic performance in moulding their students.	80.0%	20.0%	0.0%	0.0%
2.	Teachers are facilitated with ICT Tools like Laptops, LCD Projectors, Smart Boards, Wireless Internet etc.	90.0%	9.0%	1.0%	0.0%
3.	Teachers blend additional certification and skill development programs for students, to learn new skills for employability and life-long learning.	75.0%	23.0%	2.0%	0.0%
4.	Teachers mentor students on regular basis offering counselling/mentoring services for students' excellence and to overcome students' personal and leaning issues.	90.0%	5.0%	5.0%	0.0%
5.	Academics, co and extra-curricular opportunities and facilities and ambience shaped the character of students in terms of values, ethics, self-learning and creative attitudes.	80.0%	15.0%	5.0%	0.0%
6.	Institute has enabled on-line information systems for access to students, parents, faculty and others for up to-date access to information.	80.0%	10.0%	10.0%	0.0%
7.	Institute promotes sponsored research, research publications, consultancy, faculty developments, patents etc., though faculty motivation and budget provisions.	90.0%	10.0%	0.0%	0.0%
<b>QUESTIONS ON AMBIENCE</b>					
8.	Class Rooms and Laboratory ambience are good for effective instructional delivery and practice.	70.0%	30.0%	0.0%	0.0%
9.	Library facilities are good with enormous number of books, eBooks, eJournals etc., for self-learning and research.	80.0%	20.0%	0.0%	0.0%
10.	The initiatives towards co-curricular activities helped in nurturing natural talents and achieving accolades.	80.0%	15.0%	5.0%	0.0%
11.	Sports, Games and Gym facilities helped in practicing good health and in participating in inter-institutional competitions.	70.0%	25.0%	5.0%	0.0%
12.	Canteen, Mess, Dinning space, Hostel Facilities, transport facilities are adequate and good.	75.0%	15.0%	10.0%	0.0%
13.	Campus environment promotes healthy interaction of students, teachers and other stake-holders.	75.0%	10.0%	5.0%	0.0%
14.	Inclusive infrastructure meeting the needs of differently-abled stake-holders.	75.0%	20.0%	5.0%	0.0%
15.	Campus is green, plastic-free and eco-friendly; Neat and clean ways; Well maintained.	75.0%	25.0%	0.0%	0.0%



Dr. M. KATHIRVEL, B.E., M.B.A., M.E., Ph.D.  
PRINCIPAL,  
PSN Institute of Technology and Science  
Melathediyoor, Tirunelveli - 627 152

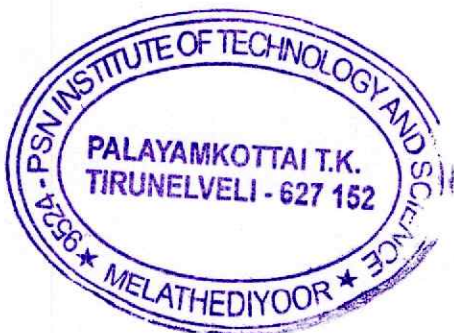
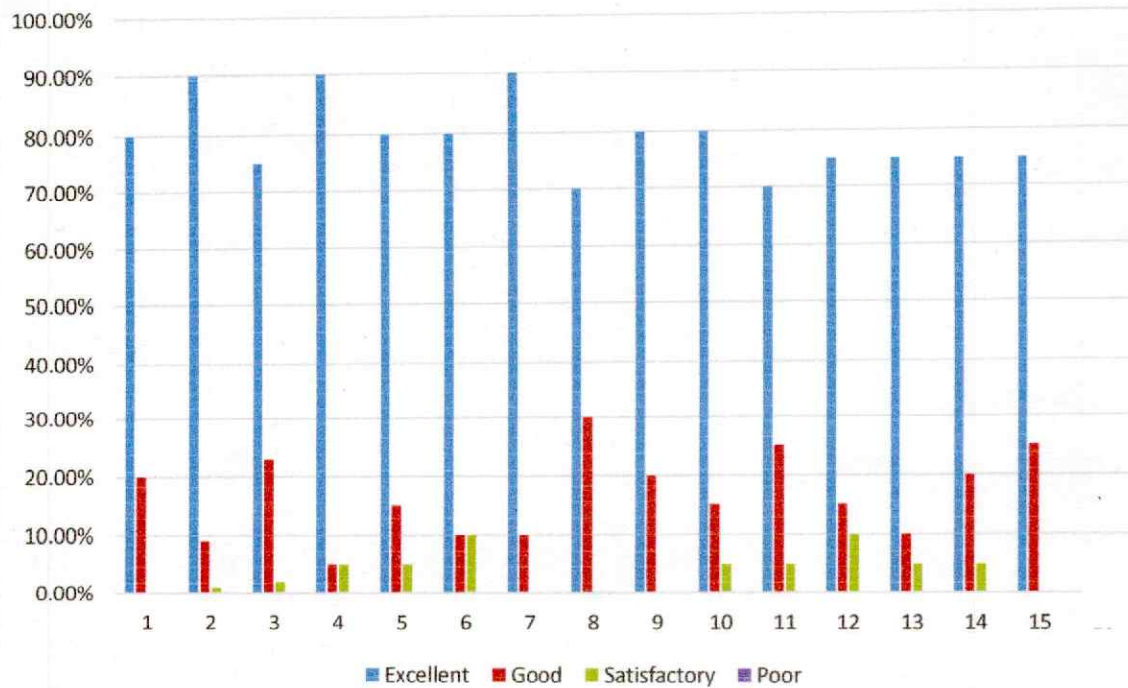


# PSN INSTITUTE OF TECHNOLOGY & SCIENCE

Melathediyoor, Tirunelveli - 627 152

[Approved by AICTE & Affiliated to Anna University, NCC 5(TN) Battalion]

## MECHANICAL AND AUTOMATION ENGINEERING TEACHER FEEDBACK-ANALYSIS



  
Dr. M. KATHIRVEL, B.E., M.B.A., M.E., Ph.D.  
PRINCIPAL,  
PSN Institute of Technology and Science  
Melathediyoor, Tirunelveli - 627 152





# PSN INSTITUTE OF TECHNOLOGY & SCIENCE

Melathediyoor, Tirunelveli - 627 152

[Approved by AICTE & Affiliated to Anna University, NCC 5(TN) Battalion]

## ACADEMIC YEAR-2022-23

### INDUSTRIAL ENGINEERING AND MANAGEMENT TEACHER

#### FEEDBACK-ANALYSIS

S.NO	PARAMETERS	4	3	2	1
<b>QUESTIONS ON ACADEMICS</b>					
1.	Teachers have complete academic performance in moulding their students.	75.0%	25.0%	0.0%	0.0%
2.	Teachers are facilitated with ICT Tools like Laptops, LCD Projectors, SmartBoards, Wireless Internet etc.	100.0%	0.0%	0.0%	0.0%
3.	Teachers blend additional certification and skill development programs for students, to learn new skills for employability and life-long learning.	90.0%	10.0%	0.0%	0.0%
4.	Teachers mentor students on regular basis offering counseling/mentoring services for students' excellence and to overcome students' personal and leaning issues.	85.0%	10.0%	5.0%	0.0%
5.	Academics, co and extra-curricular opportunities and facilities and ambience shaped the character of students' in terms of values, ethics, self-learning and creative attitudes.	83.0%	17.0%	0.0%	0.0%
6.	Institute has enabled on-line information systems for access to students, parents, faculty and others for upto-date access to information.	80.0%	20.0%	0.0%	0.0%
7.	Institute promotes sponsored research, research publications, consultancy, faculty developments, patents etc., though faculty motivation and budget provisions.	90.0%	5.0%	5.0%	0.0%
<b>QUESTIONS ON AMBIENCE</b>					
8.	Class Rooms and Laboratory ambience are good for effective instructional delivery and practice.	75.0%	20.0%	5.0%	0.0%
9.	Library facilities are good with enormous number of books, eBooks, eJournals etc., for self-learning and research.	100.0%	0.0%	0.0%	0.0%
10.	The initiatives towards co-curricular activities helped in nurturing natural talents and achieving accolades.	90.0%	10.0%	0.0%	0.0%
11.	Sports, Games and Gym facilities helped in practicing good health and in participating in inter-institutional competitions..	80.0%	20.0%	0.0%	0.0%
12.	Canteen, Mess, Dinning space, Hostel Facilities, transport facilities are adequate and good.	75.0%	20.0%	5.0%	0.0%
13.	Campus environment promotes healthy interaction of students, teachers and other stake-holders.	90.0%	10.0%	0.0%	0.0%
14.	Inclusive infrastructure meeting the needs of differently-abled stake-holders.	80.0%	15.0%	5.0%	0.0%
15.	Campus is green, plastic free and eco-friendly; Neat and clean always well maintained.	100.0%	0.0%	0.0%	0.0%



Dr. M. KATHIRVEL, B.E., M.B.A., M.E., Ph.D.  
PRINCIPAL,  
PSN Institute of Technology and Science  
Melathediyoor, Tirunelveli - 627 152

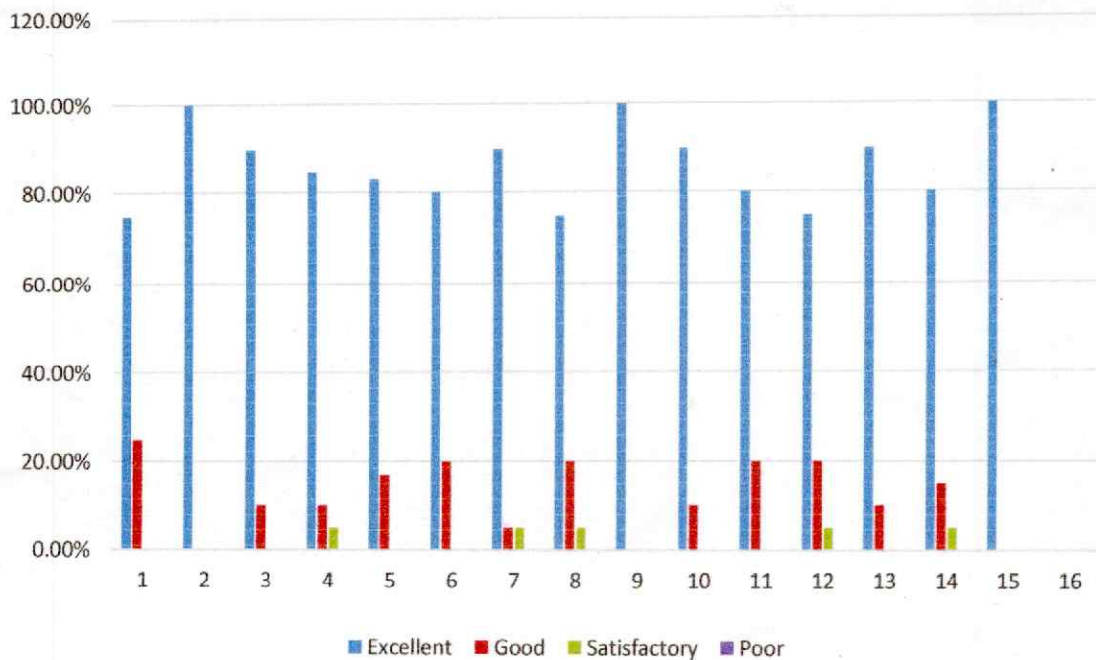


# PSN INSTITUTE OF TECHNOLOGY & SCIENCE

Melathediyoor, Tirunelveli - 627 152

[Approved by AICTE & Affiliated to Anna University, NCC 5(TN) Battalion]

## INDUSTRIAL ENGINEERING AND MANAGEMENT TEACHER FEEDBACK -ANALYSIS



  
Dr. M. KATHIRVEL, B.E., M.B.A., M.E., Ph.D.  
PRINCIPAL,  
PSN Institute of Technology and Science  
Melathediyoor, Tirunelveli - 627 152